



PIKES PEAK CENTER PRODUCTION GUIDE

UPDATED SEPTEMBER 2025

Technical Specifications for The Pikes Peak Center for the Performing Arts

Contents

Venue Contacts	5
History	6
Location	6
Capacities (See Appendix B for Capacity Map)	6
Parking	7
Shore Power	7
Guest Parking	7
Parking MapProduction	8
The El Pomar Great Hall Stage (Please see attached for ground plan)	9
Orchestra Lift	9
Towers	9
Load In	9
Crew Requirements	10
Internet	10
Event Power	10
Audio	10
FOH Mix Position:	10
Proscenium Configuration Volume Limits	10
Proscenium Configuration Control Access	11
Drive Systems	11
Monitors	11
Microphone Inventory	12
Lighting	13
Lighting Console:	13
Spotlights	13
Lighting Inventory	13
Lighting Rep Plot (Above Stage)	14
Fly Rail System	15
Line Set Schedule – This is an example and is not guaranteed to be in the air at time of event	15
Concert Ceilings	16

Rigging (See Appendix A for Rigging Plot).....	16
Aerial Performance	16
Video	17
Other Equipment	17
Risers	17
Marley Dance Floor	18
Pianos.....	18
Stacking Motor	18
Genie Lift	18
Spaces	19
Lobby Spaces (Please see Appendix A for diagram).....	19
Merchandise	19
ANB Bank Room (See Appendix A for diagram)	19
Dressing Rooms (Please see Appendix A for diagram and Appendix C for photos).....	19
Green Room	19
Studio Bee Black Box Theater (Please see Appendix B for diagram)	19
Food and Beverage.....	19
Rules and Regulations with Alcohol	19
Appendix A – Building Diagrams	20
Room Layouts.....	20
ANB Bank Room	20
Orchestra Level (FOH & BOH)	21
Basement Level with Dressing Room.....	22
Great Hall	23
Great Hall Capacity Map	23
Great Hall with Dimensions	24
Section with Dimensions.....	25
Great Hall Rigging Plot	26
Lighting Circuit locations (On/Above Stage).....	27
Audio locations.....	28
Appendix B – Studio Bee Diagram	29
Ground Plan with Dimensions.....	29
Section with Dimensions.....	30

I/O Map	31
Light Plot (Fixtures not guaranteed to be hung. Please confirm with Event Manager)	32
Appendix C – Venue Photographs.....	33
Main Lobby	33
Studio Bee Lobby	33
Mezzanine Lobby	34
ANB Bank Room	34
Backstage entrance from street	35
Backstage Hallway.....	35
Loading Dock.....	36
Loading dock to Stage	37
Stage from FOH mix	38
Great Hall from Stage.....	38
Lighting FOH Positions	39
Lighting High Side Position.....	40
Ensemble Room A – Set up for catering.....	41
Ensemble Room B	41

Pikes Peak Center for the Performing Arts

Phone: 719-477-2100 Website: <http://www.pikespeakcenter.com/>

Venue Contacts

General Manager/Booking

Dave Namesnik
719-477-2101

dnamesnik@broadmoorworldarena.com

Assistant General Manager

Michael Logan
719-477-2190

mlogan@broadmoorworldarena.com

Division Head – Events and Guest Services

Ben Chuha
719-477-2109

bchuha@broadmoorworldarena.com

Director of Booking and Ticketing

Kyle Hamman
719-477-2151

khamman@broadmoorworldarena.com

Division Head – Sales/Marketing & Promotions

Jeff Lapsansky
719-477-2117

jlapsansky@broadmoorworldarena.com

Merchandise Manager

Tuesday Heslop
719-477-2107

tuesday@broadmoorworldarena.com

Production Manager

Jeff Dean
719-477-2115

jdean@broadmoorworldarena.com

Event Manager

Janelle Augustine
719-477-2156

jaugustine@broadmoorworldarena.com

Event Manager

Dylan Pike
719-477-2129

dpike@broadmoorworldarena.com

Event Manager

Elise Jenkins
719-477-2134

ejenkins@broadmoorworldarena.com

History

The citizens of El Paso County built Pikes Peak Center for the Performing Arts in 1982 to serve as a regional entertainment, cultural, educational, and assembly center for the benefit of the citizens of El Paso County and the Pikes Peak Region. Since its opening in 1982, Pikes Peak Center for the Performing Arts has achieved international acclaim for its design and acoustic qualities. Artists and critics alike have been lavish in their praise of the center. The Broadmoor World Arena is a nonprofit charitable organization that began managing and operating Pikes Peak Center for the Performing Arts in September 2004.

Location

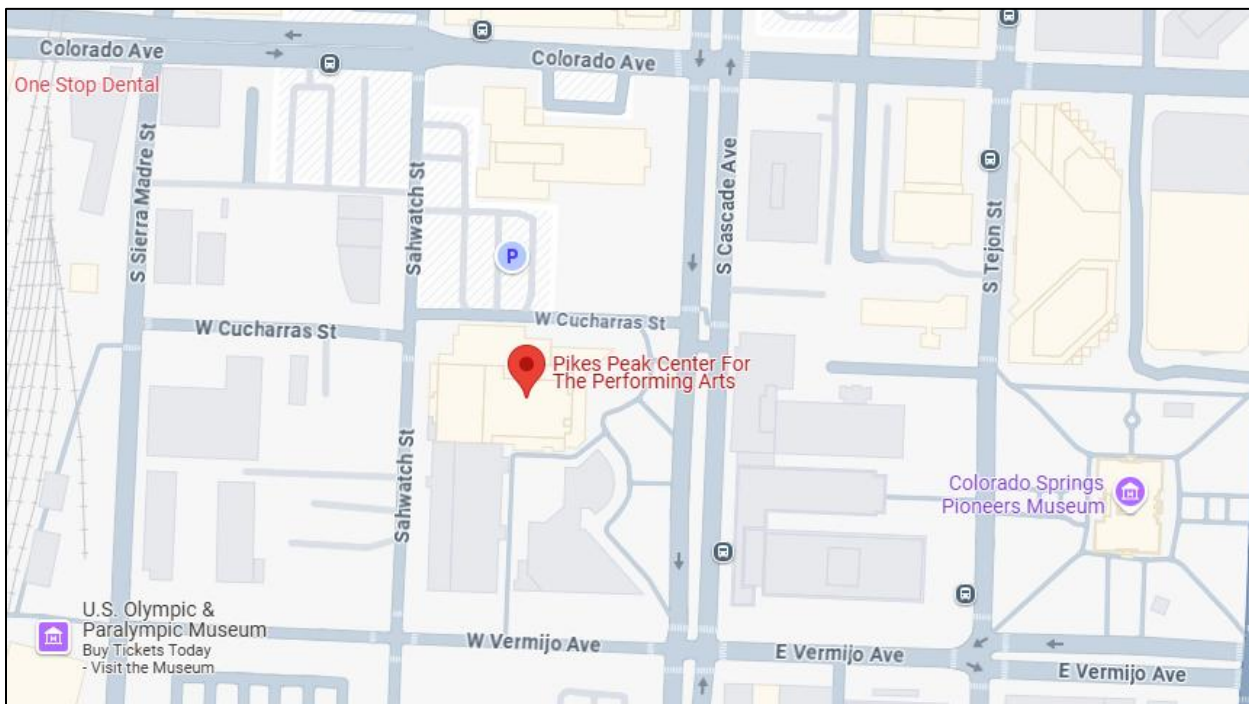
190 South Cascade Avenue, Colorado Springs, CO 80903

- Approximately 20 minutes west of Colorado Springs Airport (COS)
- Approximately 75-90 minutes south of Denver International Airport (DEN)
- Mountain Time Zone

Loading Dock and Stage Door is located on Sahwatch St. near the intersection with W. Cucharas St.

Capacities (See Appendix B for Capacity Map)

Great Hall – 2,012 total



Orchestra – 1,154 persons (including the lift, loge, and tower seating)

Mezzanine – 314 persons (including box and tower seating)

Balcony – 544 persons (including box and tower seating)

Studio Bee – 496 persons (250 seated)

ANB Bank Room – 72 persons

Parking

Pikes Peak Center has two (2) Loading Dock Parking Spaces on the West side of the building on the corner of Sahwatch St. and West Cucharas St. All other parking spaces are public on-street metered parking. There are metered spaces directly outside of the backstage door. Meters can be pre-paid or “hooded” for a fee. Please contact us at least 7 days prior to the event to have those meters pre-paid. Meters must be paid Monday through Saturday from 8 am-8 pm and Sundays from 1 pm-8 pm, if we have not hooded the meter.

Shore Power

Shore power is available for a fee and can be placed at the street end of the dock for use by buses parked on the street. PPC has equipment to supply 1 hookup (up to 2 hookups are available if providing own connections). We have 3 – 50 AMP connections and 2 – 30 AMP connections. See Appendix C for pictures.

Guest Parking

Pikes Peak Center does not own or manage any parking other than the two (2) loading dock spaces for production load in and load out. There are multiple parking options available for both guests and clients:

El Paso County Parking Garage: Paid parking is available in the secured, covered El Paso County parking garage located on the south side of Pikes Peak Center at Sahwatch St and Vermijo. The garage is open 24 hours a day and 7 days a week. Handicapped parking spaces are available on each level of the parking garage. There are approximately 225 parking spaces available to the public. During Events, the garage will staff the entry so guests can pay when they enter and then drive out afterwards.

Metered Parking: Meters are active Monday thru Saturday 8 am-8 pm and Sundays 1 pm-8 pm. Metered Parking surrounds Pikes Peak Center on Cascade Ave., Sahwatch St., Colorado Ave., and Vermijo Ave.



YELLOW STAR – BACKSTAGE ENTRANCE

GREEN STAR – MAIN ENTRANCE/BOX OFFICE

RED OUTLINES – METERD PARKING

BLUE BLOCKS – TRUCK SPACES AT DOCK BAYS

Please Note that Semi Cabs need to detach from the trailer when we are not actively loading in or out. They stick out too far into the street

Production

The El Pomar Great Hall Stage (Please see attached for ground plan)

The stage floor is maple over plywood, over two layers of sleepers, over neoprene blocks. The floor is painted black and has excellent resiliency for ballet and other dance events. Prior approval must be given before lagging or screwing into the floor. The center is equipped with a semi-rigid proscenium safety curtain to close off the stage in the event of on-stage fire. The fire curtain is designed to operate under emergency or maintenance conditions. The fire line must not have stage pieces directly underneath or crossing the line as it may have to come down in an emergency. Beyond the fire line the stage is on a rake of 6 degrees to the downstage edge. The maximum allowable load on the floor is 160 lbs./sq. ft.

Upstage Towers/Wall to the Plaster Line = 52 ft.

To Down Stage Edge = 58 ft.

To Down Stage Edge of 1st Lift = 74 ft.

To Down Stage Edge of 2nd lift = 88 ft.

Stage Left to Stage Right = 115 ft. Live Load = 160 lbs./sq ft.

Proscenium opening = 81ft Wide x 40'High. Distance from Proscenium to the Down Stage Edge 6ft.

Orchestra Lift

The Pikes Peak Center features a full-size orchestra pit with complete access to the backstage area. It consists of two sections 64'W x 12'D that can be raised to the stage floor, house floor, and pit floor. These lifts can be lowered to pit level and used as an orchestra pit, raised to the house floor (loaded with seating), or raised to stage level to extend the downstage edge.

Towers

Pikes Peak Center has mobile towers built for extra seating and to be used as a concert shell. These towers are moved using an air caster system. There are on stage towers, two (2) towers stored on the Stage Left wall and two (2) on the Stage Right Wall. Five (5) more towers are stored along the Up Stage wall. Additionally, we have (2) stair units to use if we seat the stage towers. The On-Stage Towers typically stay in their storage position along the upstage and stage left and right walls. They are used by orchestras and choirs as a concert shell using a curved upstage configuration. These towers can only be used for upstage seating if set in a straight line and communicated in advance with ticketing.

There are six (6) throat towers (downstage of the proscenium), three (3) on Stage Left and three (3) on Stage Right. The Throat towers cannot be moved off stage.

Load In

The Stage entrance is located on the west side (Mountain Side) of Pikes Peak Center at the corner of Sahwatch St. and W. Cucharas St.

There are two (2) loading docks at the Pikes Peak Center. The Docks are at a fixed height of 48" with edge of dock levelers. There is a 20' level push from the Dock to the Pikes Peak Center Main Stage and a 50' level push to Studio Bee.

Crew Requirements

Local stagehands are non-union and employed by The Broadmoor World Arena/Pikes Peak Center on an as needed basis. Various crew sizes, skills, and specialties are available on request with advanced notice.

The house minimum for local crew is head lights, head audio, head flyrail, and flyrail weight loader. The flyrail crew can move to general hands if not needed for flyrail. Other required department heads are determined by Event Manager/Production Manager in advance. Crew shift/break requirements in accordance with state law and company policy. There will be a 15-minute paid break at the end of 2 to 2.5 hours, a 1 hour walk away (or 30- minute paid and meal supplied) meal break by 5 hours and every subsequent 5 hours. Crew must be fed if moving directly from show call to load out and the total time worked without a break will be greater than 5 hours. Load in and load out calls are on 4-hour minimums, with a 2-hour minimum callback after a meal break. Other conditions may apply on a show by show basis.

For Rigging, we use an outside rigging contractor. For riggers only, there will be a 6-hour minimum for the 1st call of the day with a 2-hour minimum callback after a meal break. A call back later in the day (not after a meal break) is a 5-hour minimum call. OT is reached at 8 hours in one day and before 7am or after midnight. Subject to change based on contractor's notice.

Internet

Pikes Peak Center has Wi-Fi and hardline internet options available for tour/organizer/production use. There is no public Wi-Fi in the venue. Download speeds and file sizes are limited at Pikes Peak Center's discretion. With advanced notice, hardline internet access is available on the stage, at center mix, and in the dressing rooms.

Event Power

The company switch is located stage left. On stage left we have 3 switches, each switch is 3 phase, 4 wire, 120/208v 60hz. We have 2 – 400 amps and 1 – 300 amps. On stage right we have 1 switch, which is 3 phase, 4 wire, 120/208v 60hz and 400 amps. All of the connection is with lugs or camlock. The house transfer panel, located adjacent to the company switch, permits control of 108 FOH circuits by road boards. That transfer panel is only accessed by the Head Sound, Head Lights, or the steward.

Audio

FOH Mix Position:

The FOH Mix Position is 16' wide by 6' deep and is positioned 100' from the DS Edge in the center of the orchestra seating. There is an optional Loge position that can be utilized; however, it needs to be planned into the ticketing for the event as it will require seating kills to accommodate.

Proscenium Configuration Volume Limits

The sound volume limit using the Proscenium Configuration is the OSHA standard for 2-hour exposure limit of 100 dBA, slow response, measured at the FOH mix position.

In the case of sustained, low-end driven music, the client may want to supplement the Proscenium Configuration subwoofers with additional stage-stacked 18" subwoofer cabinets. The Pikes Peak Center does have (4) dual 18" subwoofer cabinets used primarily for Studio Bee that may be employed for these types of shows.

Visiting Performers will have access to overall graphic and/or parametric output equalization, as well as sourceEQ, compression, and limiting for the overall sound program, main, and monitor speaker systems. These parameters are accessible on the FOH digital mixing console, and the floor-monitor digital mixing console.

Crossovers, HPF/LPF, and driver alignment for the mains and monitor speaker systems, EQ, delay, and synchronized levels for speaker subsystems are not accessible to the guest audio technician. These speaker systems sound great right from the start and have been carefully aligned in time and level to the main speakers. Please take the time to critically listen to the system as it is before requesting control over parameters that cannot be improved.

Proscenium Configuration Control Access

Pikes Peak Center's Great Hall sound system has (2) system-control-access points. They are all-in-one PCs with a mouse and keyboard each, and are located at the audio control room, and the FOH digital mixing console in either the FOH or Loge positions. These control points provide the following primary functions:

- 1) Switching between L+R- or Aux-fed subwoofers
- 2) Muting and unmuting various speaker subsystems
- 3) Routing and level control of walk-in music sources
- 4) Making lobby/house pages via the paging microphone in the control room and off-stage right
- 5) Routing and un-routing the program feed into the back-stage paging system
- 6) Monitoring the health of the entire Great Hall sound system

Drive Systems

Audio Systems	
FOH Console	Yamaha DM7 EX
Monitor Console	Yamaha DM7 EX
I/O	2 – Rio 32 in stage racks
Lobby/House Inputs mixing system	1 BSS London 326/806 DSP system Analog LRSF or Dante LRSF
BOH Paging System	1 BSS London 326/806 DSP system
Amplifiers	16 Crown I-Tech 4X3500HD 4-ch. network amplifiers 2 Crown I-Tech 5000HD 2-ch. network amplifiers
FOH Speakers (Flown)	20 VTX-V20 10" 3-way passive tri-amped line-array cabinets 12 VTX-S25 dual-15" passive cardioid subwoofer cabinets
Front Fills (placeable per show)	6 JBL AC26 6" 2-way passive full-range cabinets
Tower Seating Speakers	18 JBL Control 226B/T 6.5" passive co-axial, high-power ceiling speakers
Rear Balcony Delays (flown to 26'2")	3 JBL AM5212-00 12" 2-way passive full-range cabinets
Lobby Speaker System	1 lot OSE JBL ceiling and Control series passive cabinets
Wireless	8 channels of Shure Axient (w/ handhelds/belt packs)

Monitors

Monitors	Quantity
Clair Brothers WEDGE-PL 12" 2-way passive left-hand floor monitor	4
Clair Brothers WEDGE-PR 12" 2-way passive right-hand floor monitor	4
JBL Eon 612 w/ stands	2

Microphone Inventory

Microphone	Quantity
AKG C430 miniature condenser overhead/cymbal microphones	4
Audio Technica ATM 25 dynamic cardioid tom-tom drum microphones	3
Audio Technica U857Q gooseneck microphones	2
Audix D6 dynamic cardioid kick-drum microphone	1
Audix D2 dynamic hyper-cardioid rack-tom microphones	2
Audix D4 dynamic hyper-cardioid floor-tom microphone	1
Audix i5 dynamic cardioid snare-drum microphone	1
Audix ADX51 miniature condenser overhead cymbal microphones	2
Audix OM7 dynamic hyper-cardioid vocal microphones	4
Audix SCX25A large-diaphragm cardioid condenser piano microphone system	1 pair
Beyer Dynamic TG V90R ribbon vocal microphones	1
Countryman H6 headset microphones (for Shure wireless belt packs)	4
Crown PZM 160 boundary condenser microphones	2
EV RE20 dynamic instrument microphones	4
Shure Beta 52 dynamic kick-drum microphones	2
Shure KSM9 super/cardioid condenser vocal microphone modules (for Shure wireless system)	8
Shure KSM9 super/cardioid condenser vocal microphones	2
Shure KSM32 side-address large-diaphragm condenser instrument microphones	2
Shure MX185 lapel condenser microphones (for Shure wireless belt packs)	8
Shure SM57 dynamic cardioid instrument microphones	3
Shure SM58 dynamic cardioid vocal microphones	8
Shure SM81 cardioid pencil condenser instrument microphones	4
Shure AXT 100 belt pack wireless	8
Shure RPW 118 Beta 58a wireless mic head	4
Shure RPW 112 Beta SM58 wireless mic head	4
Shure SM 48	4
Shure SM 91	2

Lighting

Lighting Console:

In-house Console is an ETC Ion. The control board is an ETC ION Dimmer per circuit configuration with 345 @ 2.4kw, 30 @ 6.0kw. non- dims available: 6 @ 2.4kw and 6 @ 6.0kw. All patching is DMX through the lighting control board.

Spotlights

The Pikes Peak Center is equipped with two Strong Xenon Super Troupers 2Ks and two Super Troupers 1.6Ks. Located in a booth at the rear of the balcony. The throw is 150' to the front edge of the stage.

Lighting Inventory

FOH FIXTURES:

1st Beam:

Source4 Zooms: 6
Source4 Ellipsoidals 750W: 2
10 degree barrel: 2

2nd Beam:

Source4 PAR: 3
Source4 Ellipsoidals 750W: 18
5 degree barrel: 14
10 degree barrel: 19
26 degree barrel: 2

Balcony and Balcony Box Rail:

Source4 Ellipsoidals 750W: 24
5 degree barrel: 2
10 degree barrel: 6
19 degree barrel: 7
26 degree barrel: 8
No barrel: 9

3rd Beam:

Leks: 31
5 degree barrel: 7
10 degree barrel: 29
19 degree barrel: 4
Lustrs: 10

Tower Rail:

Lustrs: 12

REP PLOT (ABOVE STAGE):

If these lights are struck and needing to be restored after your event, there may be additional fees incurred)

Source4 Ellipsoidals 750W: 18
LED Par: 22
Source4 Par: 28 w/ wide lenses

IN THE SHOP:

Bodies:

575 Ellipsoidals: 59
750 Ellipsoidals: 13
Source4 Zooms: 4
LED Source4: 1

Barrels:

19 degree: 38
26 degree: 43
36 degree: 55
50 degree: 17
10 degree: 6
5 degree: 4

PAR64:

Wide: 23
Medium: 65
Narrow: 78
Very Narrow: 81

Cyc Lights:

top with c-clamps: 10
bottom with feet: 10
100' DMX: 4

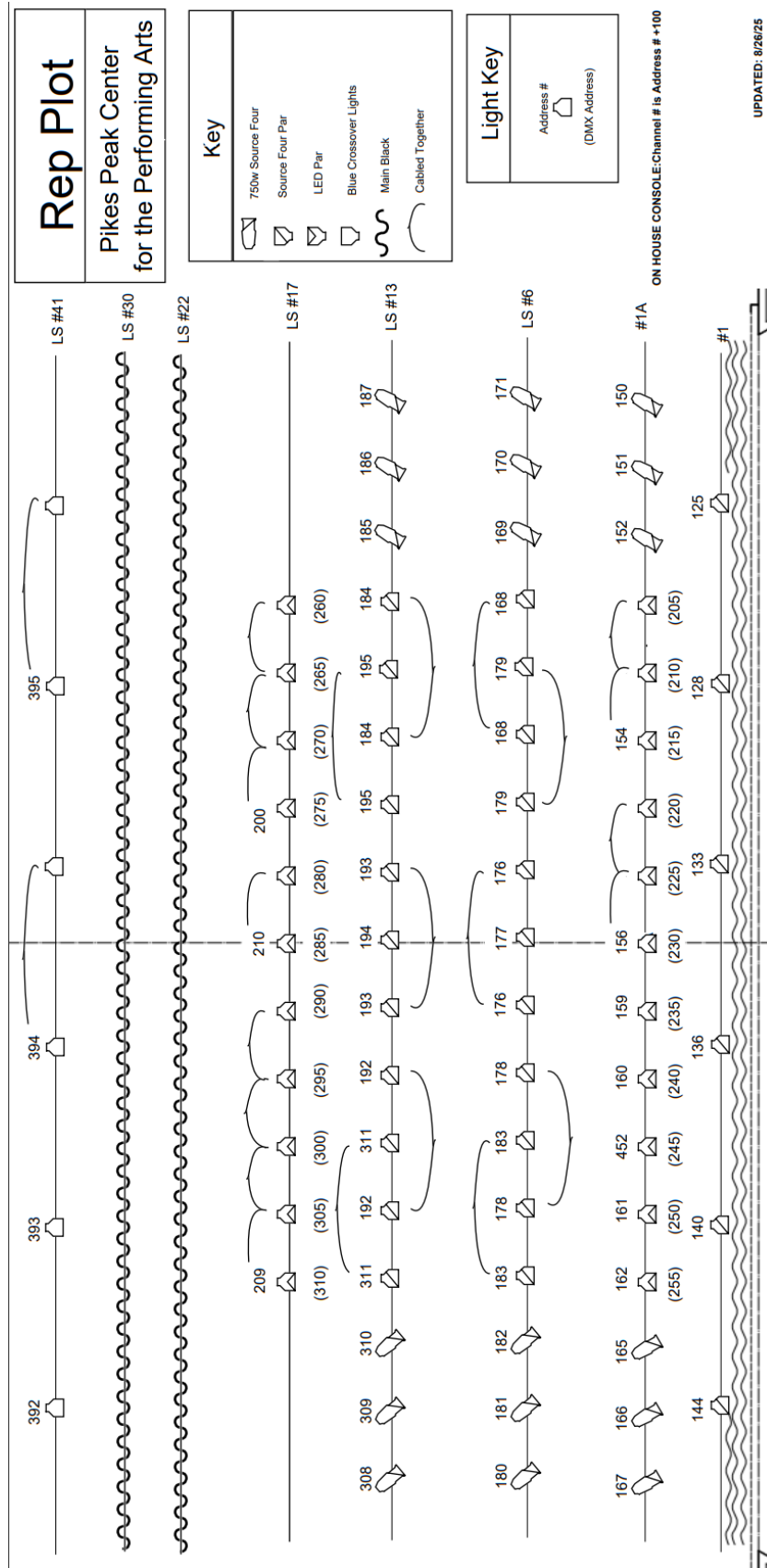
Source4 PAR Lenses:

Wide: 14
Medium: 67
Narrow: 97
Very Narrow: 80

- See Appendix C for Photos of FOH Lighting Positions

Lighting Rep Plot (Above Stage)

Due to the high volume of varying types of events coming through the theater, we do not guarantee a preset lighting plot going into an event.



Fly Rail System

Pikes Peak Center has a single purchase Flyrail system. The Flyrail and Load rail are located on separate Stage Right lofts.

The capacity of each arbor is 1,500 lbs. The full arbor capacity is 40,000 lbs.

Venue Head Fly rail must be present for fly rail operation, and a weight loader must be present for hanging, stripping, or transferring any weight on or off of the batten.

Line Set Schedule – This is an example and is not guaranteed to be in the air at time of event.

PPC Line-Set Schedule								
Batton	Item on Batton	Weight	From Plaster	Length	Show Use	Notes/Comments	Weight	Electrical Boxes
House Curtain	House Curtain	N/A	0'-11	80'				
Teaser	Main Teaser	N/A	1'-7	80'				
Hard Legs	Hard Legs	N/A	2'-3	80'				
Electric 1	LX 1 House Rep Plot	N/A	2'-11	65'		6 PAR Blinders		
Electric 1A	LX 1A House Rep Plot	N/A	4'-2	65'		3 Lekos, 10 LED Pars, 3 Lekos		
#1			4'-10	65'				
#2			5'-6	65'				
#3			6'-0	65'				
Concert Ceiling 1	N/A	N/A	6'-7	90'		Do Not Hang a dynamic piece on either side		
#4			8'-0	65'				
#5			8'-8	65'				
#6	LX 2 House Rep Plot		9'-4	65'		3 Lekos, 10 Source4 Pars, 3 Lekos	360	
#7			10'-4	65'				
#8			11'-6	65'				
#9			12'-8	65'				
#10			13'-4	65'				
#11			14'-0	65'				
#12			15'-4	65'				
#13	LX 3 House Rep Plot		16'-9	65'		3 Lekos, 10 Source4 Pars, 3 Lekos	360	
#14			17'-4	65'				
#15			18'-0	65'				
Concert Ceiling 2	N/A	N/A	19'-5	90'		Do Not Hang a dynamic piece on either side		
#16			20'-8	65'				
#17	LX 4 House Rep Plot		22'-0	65'		10 LED Pars	175	
#18			23'-4	65'				
#19			24'-2	65'				
#20			24'-8	65'				
#21			25'-4	65'				
#22	Main Black		26'-0	65'			320	
#23			27'-5	65'				
#24			28'-0	65'				
#25			28'-8	65'				
#26			29'-10	65'				
#27			30'-6	65'				
Concert Ceiling 3	N/A	N/A	31'-7	90'		Do Not Hang a dynamic piece on either side		
#28			32'-8	65'				
#29			34'-3	65'				
#30	Main Black		35'-7	65'			320	
#31			36'-4	65'				
#32			36'-11	65'				
#33			37'-8	65'				
#34			38'-3	65'				
#35			39'-7	65'				
#36			41'-0	65'				
#37			42'-0	65'				
#38			42'-8	65'				
Concert Ceiling 4	N/A	N/A	43'-9	90'		Do Not Hang a dynamic piece on either side		
#39			45'-0	65'				
#40			46'-10	65'				
#41	Concert 1 Inlets		47'-6	65'		Blue 1 Inlets	140	

Soft Goods

Soft Good Inventory	Quantity/Description
Main Curtain	Located directly upstage of the proscenium, the main curtain, its operation is either motorized fly (50' per minute) or hand drawn from stage right. The main curtain is sage green in color and 86'W x 43'H
Black Velour Legs (10' W x 60' H)	6 sets
Black Velour Borders (65'W x 12'H)	5
Midstage/Upstage Black (35'W x 60' H)	4 panels (2 panels = 1 main black)
Natural White Cyclorama (64'W x 52'H)	1
Natural White Scrim (65'W x 30'H)	1
Black Scrim (65'W x 30'H)	1

Concert Ceilings

The Pikes Peak Center has 4 concert ceilings with PAR64 lighting. The ceilings may either be stored vertically and flown out or brought in to form a ceiling over the stage with each section tilted to be horizontal. When the ceilings are down in the horizontal position, they may be circuited to provide overhead light from 18 PAR64 lights per concert ceiling section (ceiling #4 has only 9 lights).

Scenic pieces that need to be moved during the performance may not be hung on the battens on either side of any of the concert ceilings. The lighting is not fully recessed, and the dynamic scenic elements can catch on it and tear.

Rigging (See Appendix A for Rigging Plot)

If there is rigging as a part of your event, we require 2 up riggers and 1 head down rigger at a minimum for the rigging call. While Pikes Peak Center does not have riggers in house, we do have a contractor who we work with and will coordinate with.

Aerial Performance

All dance, ballet, or any other performance which will involve an aerial performance where performers are lifted from the stage and suspended above the stage by mechanical operations must have a complete rigging plan submitted to the Pikes Peak Center Production Manager/Technical Director and the Event Manager for the show no less than four weeks in advance of the planned show date.

The tour must have a competent rigger, who is thoroughly knowledgeable about the show run and safe set up of all aerial ballet equipment, available from pre-load in/walk and chalk through show run and completion of load out.

The venue (Pikes Peak Center) is not responsible for providing rigging hands unless prior arrangements are made with the Event Manager in charge of the event. The arrangements should be noted during the advance call.

Video

The Pikes Peak Center has limited video equipment while having the capabilities to partner with video providers or touring equipment to augment in house equipment.

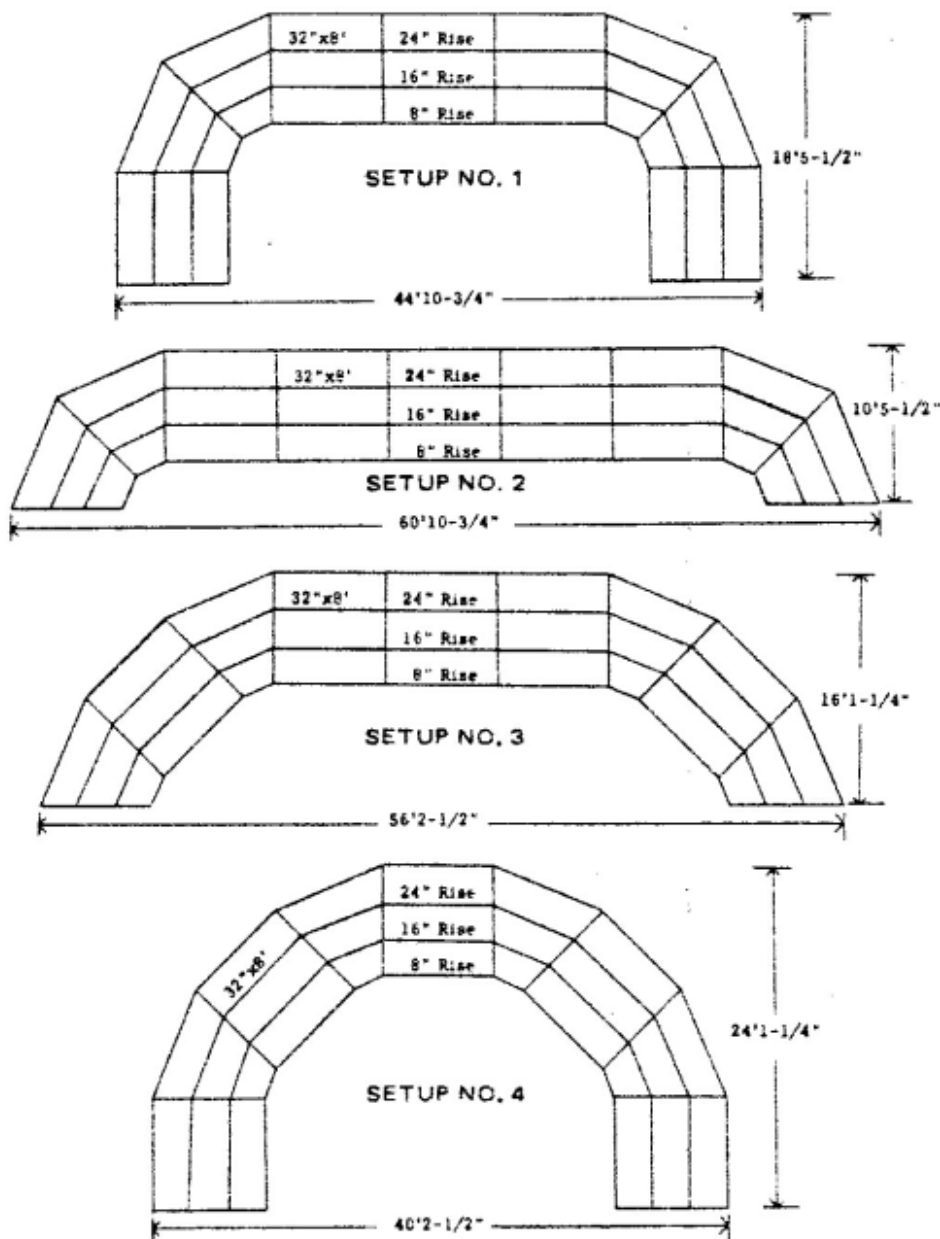
Screen sizes:

- 15'x20' (can be flown or ground stacked – can accommodate rear projection with a strong enough projector)
- 30'x40' (can only be flown – no rear projection)
- 5'x6' (ground stacked – no rear projection)
- 7'x7' (ground stacked – no rear projection)

Other Equipment

Risers

- Wenger Trouper Seated Chorale Risers: Maximum Capacity Arrangement: 116 seats (Does not include space on ground in front of the riser) See diagram for configurations:



- Sico Risers: 6'x8' decks

Sico Riser Inventory (6'x8")	Quantity
Leg Height 8"	11
Adjustable Leg Height 16" OR 24"	11
Adjustable Leg Height 24" OR 32"	11

- Our Sico Risers are carpeted and fold out to create the 6'x8' surface.
- The adjustable leg height is one or the other and cannot be set to an in between height.

- Black top solid surface: 4'x8' decks

4'x8' Riser Inventory	Quantity
4'x8' Decks	52
4'x8' Decks @ 8"	13
4'x 8' Decks @12"	2
4'x8' Decks @ 16"	4
4'x8' Decks @ 24"	2
4'x8' Decks @ 32"	17
4'x8' Decks @ 40"	2
4'x8' Decks @ 48"	3

- If we do not have the needed riser leg inventory in house, we can rent legs for an additional cost.

Marley Dance Floor

Dimensions: 5'3" x 65' each roll – Total of 7 rolls

- Color: Brown on one side and Gray on the other
- Composition: Vinyl
- Weight: 130 lbs. each roll

Pianos

- Baldwin Concert Grand Piano 6'
- Steinway Concert Grand Piano 9'
- 2 Yamaha Upright Pianos

Stacking Motor

The stacking motor is located on stage left and must be operated by a venue stagehand.

Genie Lift

Pikes Peak Center owns 1 Genie lift capable of working at a height of 38'. Venue staff must be present onstage for operation.

Spaces

Lobby Spaces (Please see Appendix A for diagram)

Great Hall Lobby, Mezzanine Lobby, and Studio Bee Lobby

Merchandise

Merchandise will be inventoried in and out and sold based on prearranged agreement. Net sales shall be gross receipts less any associated expenses, including security, sales taxes, and credit card fees. Pikes Peak Center will collect sales tax for the city of Colorado Springs and the state of Colorado to include El Paso County.

ANB Bank Room (See Appendix A for diagram)

On the Mezzanine level of Pikes Peak Center Lobby, we have a room where we host parties and pre-show dinners. The capacity is around 72 depending on the configuration. Unless otherwise discussed, the venue will default to selling preshow dinners in the room.

Dressing Rooms (Please see Appendix A for diagram and Appendix C for photos)

Six (6) star dressing rooms are located outside the up-stage wall off the main stage. Each dressing room is equipped with a make-up station, toilet, sink, and shower. The basement level has two chorus dressing rooms (A=2,000 sq ft with 24 Make-up stations) (B=1,800 sq ft with 31 Makeup Stations). Each chorus room is equipped with make-up stations, sinks, showers, and toilets. A 490 sq. ft. common space is located on the lower level adjacent to the chorus dressing rooms. Show washers and dryers are available upon request. Hard-wired internet can be provided in the dressing rooms with advanced notice.

Green Room

Studio Bee Black Box Theater (Please see Appendix B for diagram)

This 50'x68' space is surrounded by black velour drapes and features a moveable lighting grid. Studio Bee has a full theatrical lighting and sound system, and it is a perfect setting for meetings, receptions, and intimate drama, music, and dance performances. Studio Bee features a wooden floor and a separate entrance, lobby, and restroom area from the Great Hall. A soundproof design permits Studio Bee activities to be held simultaneously with events in the Great Hall. Capacity is around 250 depending on the configuration.

Food and Beverage

All food, beverages and concessions are operated and controlled by Oak View Group (OVG) Hospitality. Together with the Pikes Peak Center, OVG Hospitality will determine the number of sales locations required to serve the public. All arrangements for serving food and beverages, and all sales of concessions are to be made through OVG Hospitality. No outside food and beverage is allowed.

Rules and Regulations with Alcohol

No alcoholic beverages may be brought into the Pikes Peak Center (neither by the public nor by the tour). Alcoholic beverages may be sold during events at the discretion of the Pikes Peak Center and Oak View Group (OVG). All alcoholic beverages are to be provided by OVG Hospitality. Alcoholic beverages are permitted in designated or licensed areas only. No alcoholic beverages may be consumed in the parking lot.

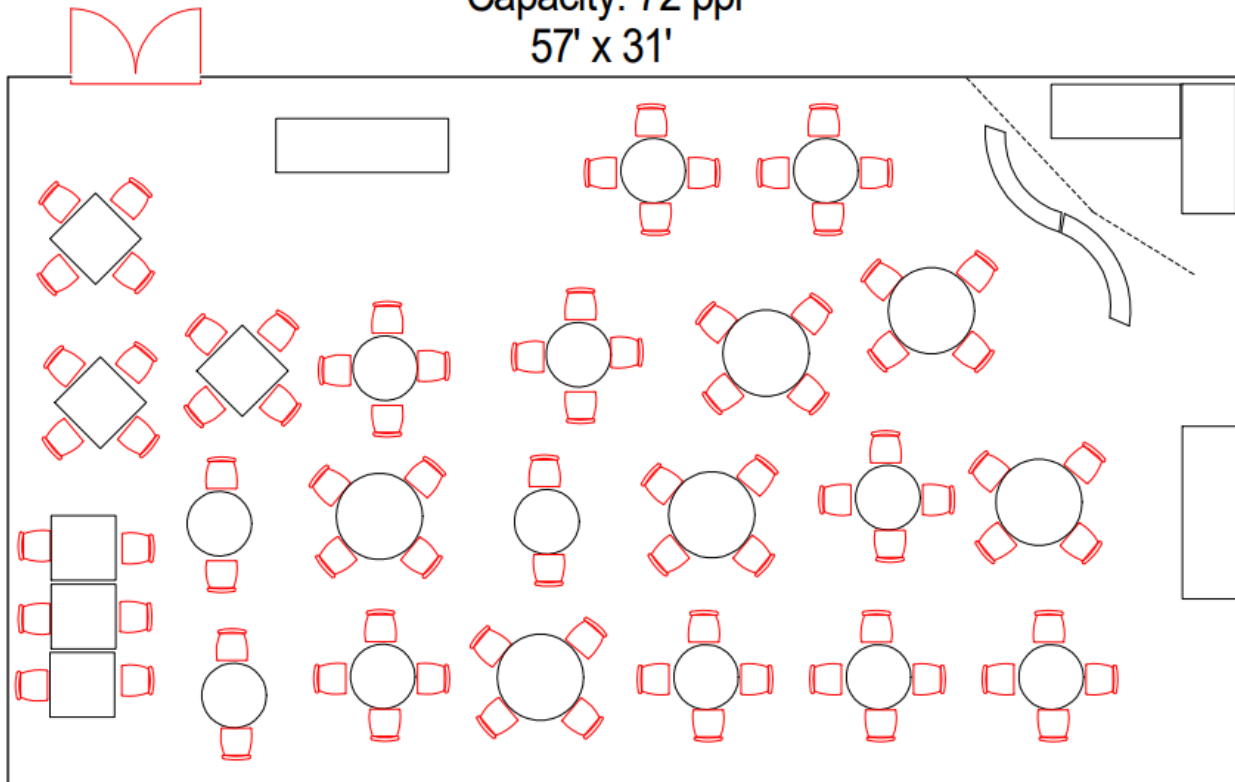
Appendix A – Building Diagrams

Room Layouts

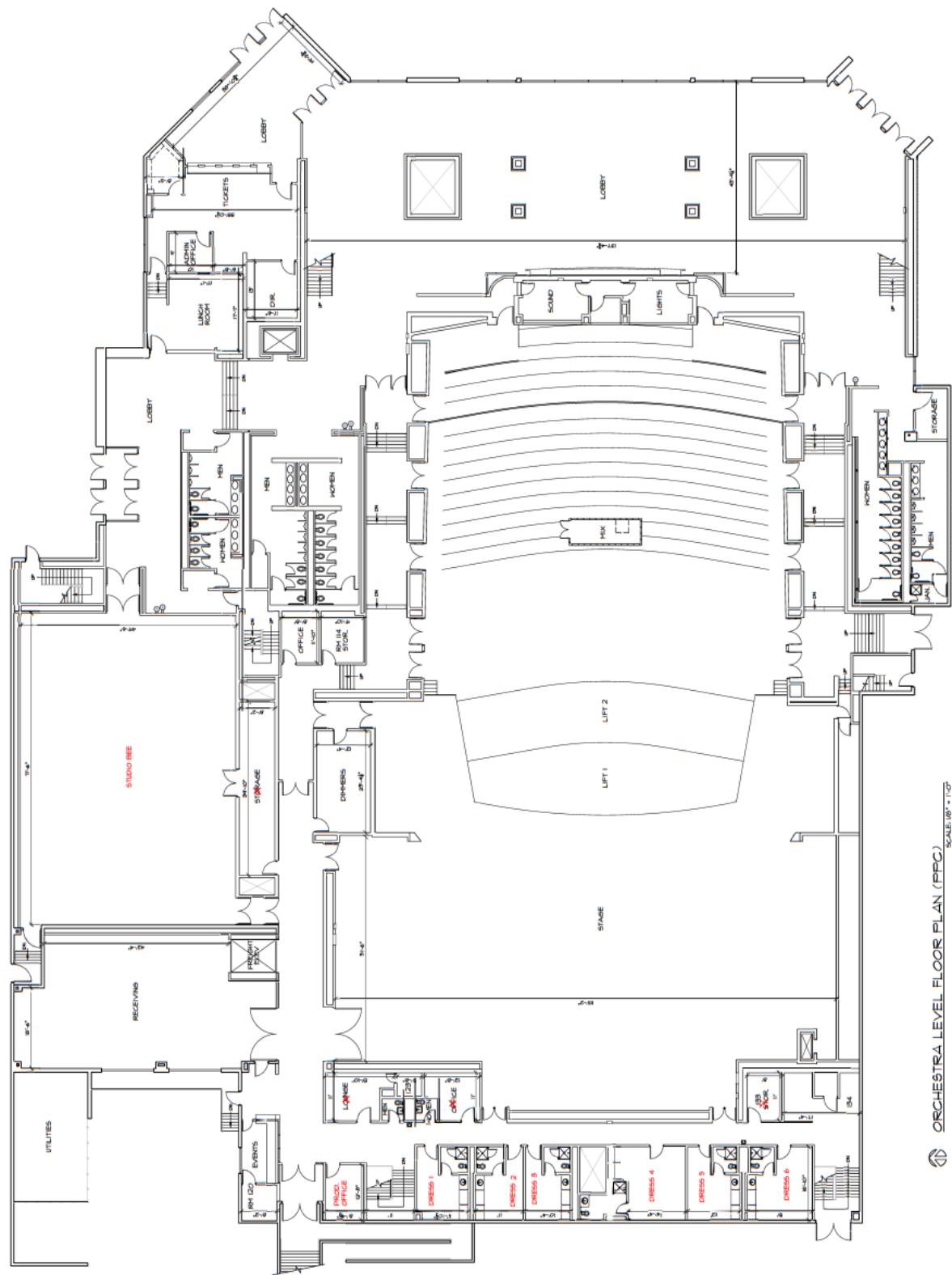
ANB Bank Room

ANB BANK Room

Capacity: 72 ppl
57' x 31'

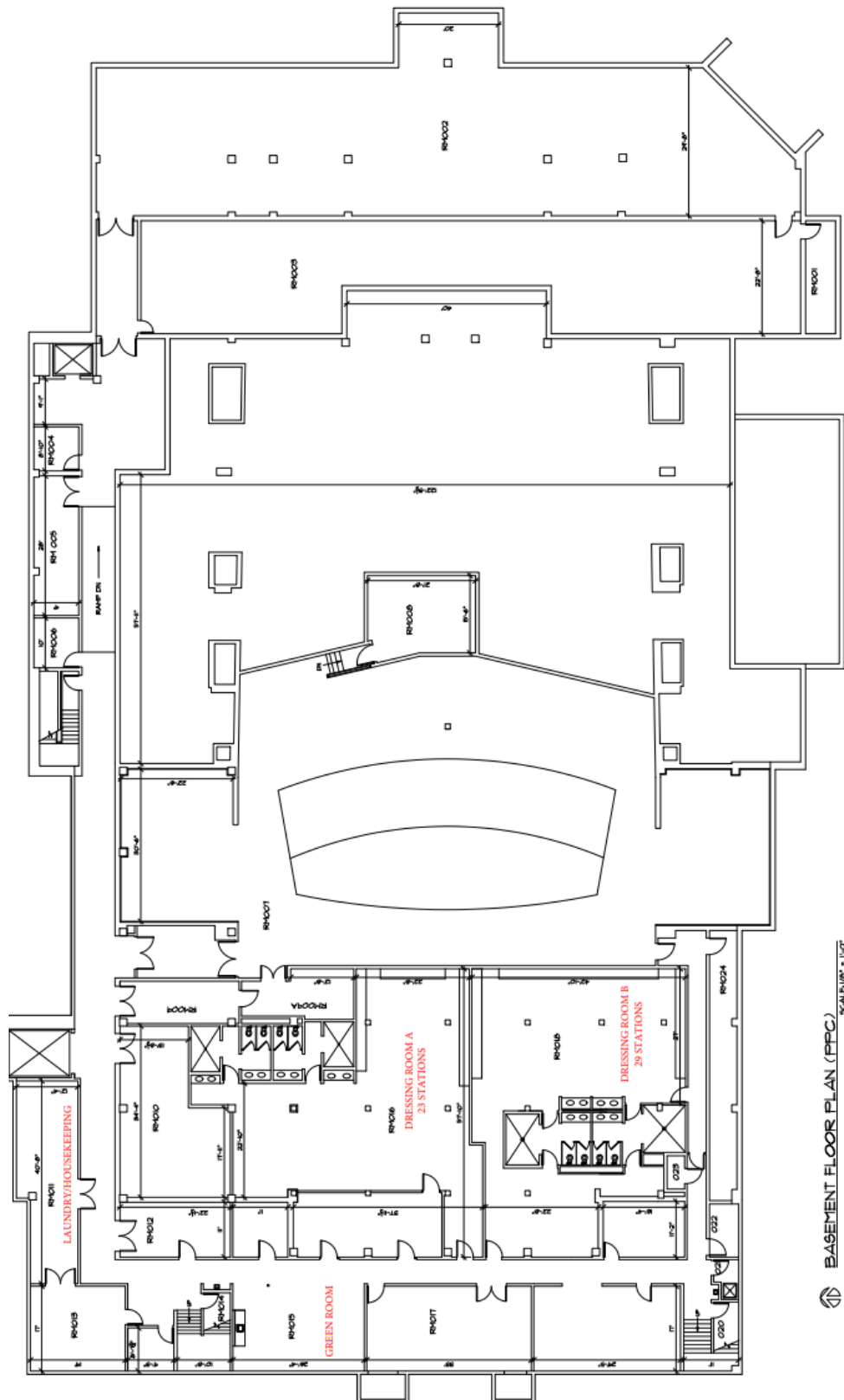


Orchestra Level (FOH & BOH)



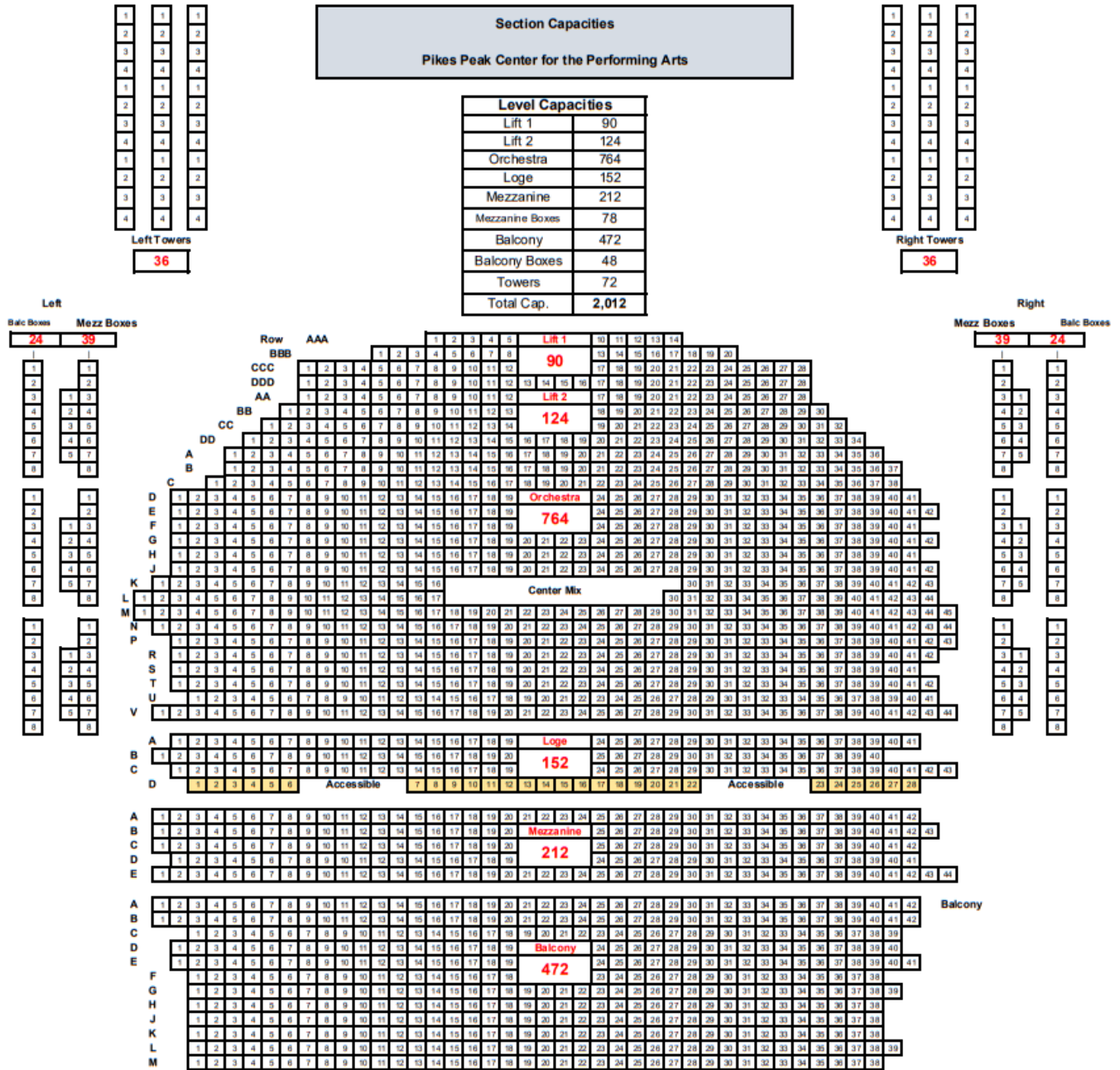
ORCHESTRA LEVEL FLOOR PLAN (PPC)
SCALE: 1/8" = 1'-0"

Basement Level with Dressing Room

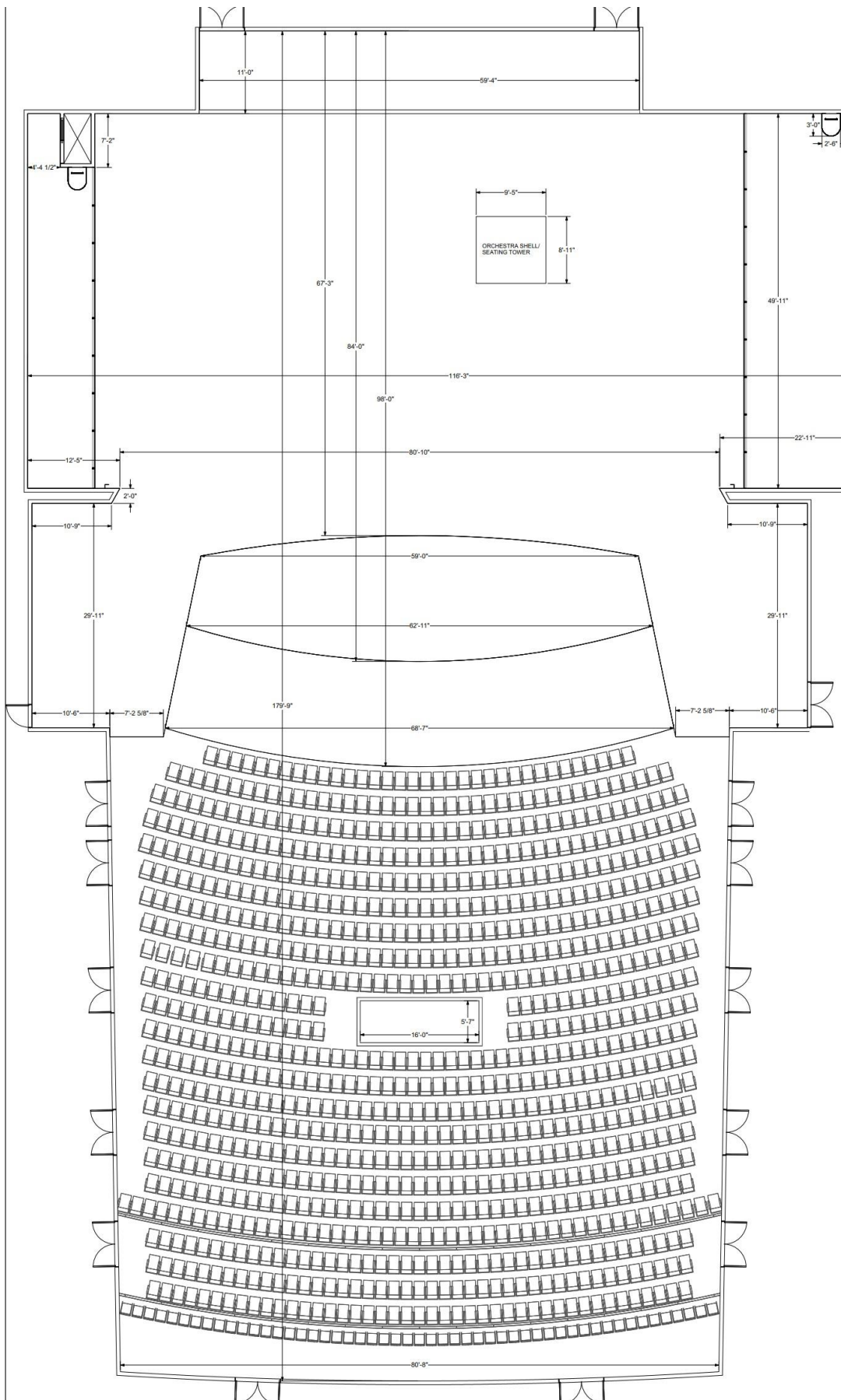


Great Hall

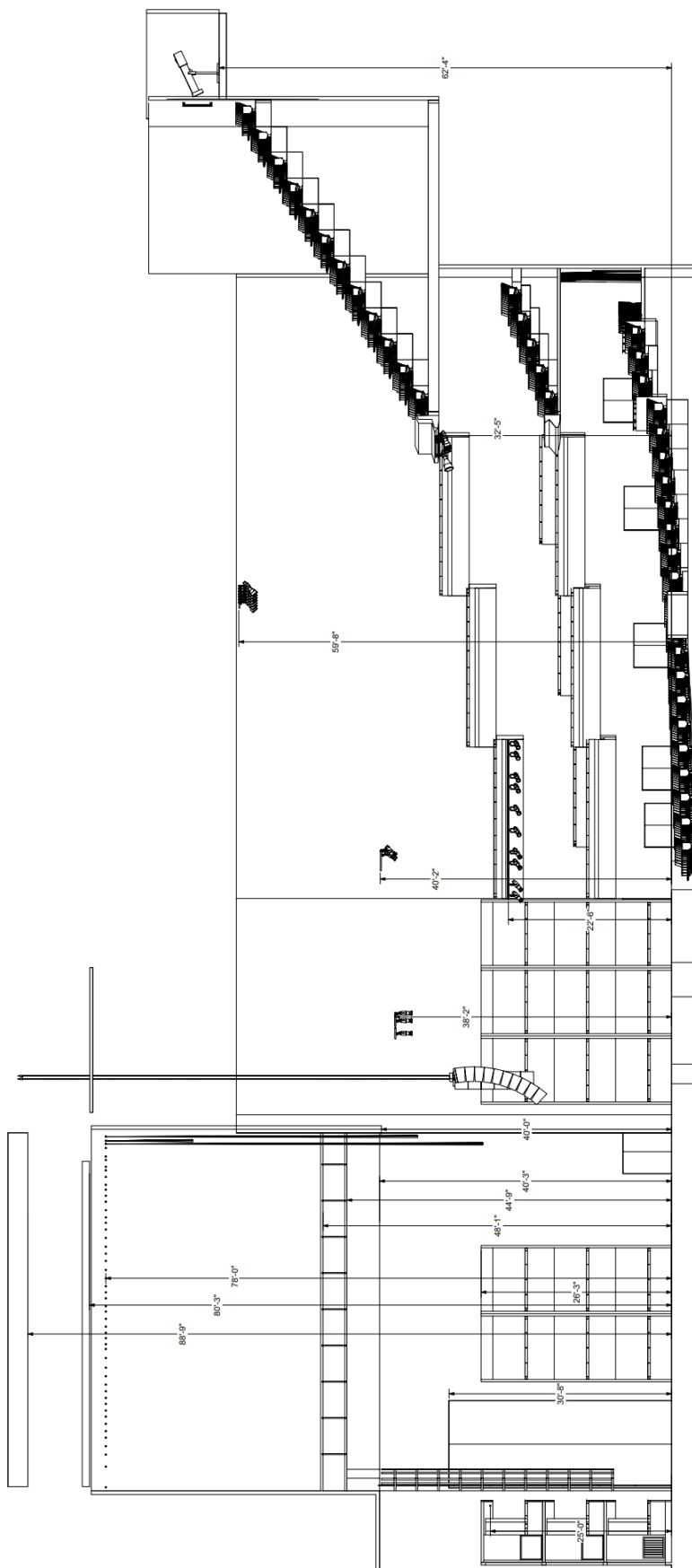
Great Hall Capacity Map



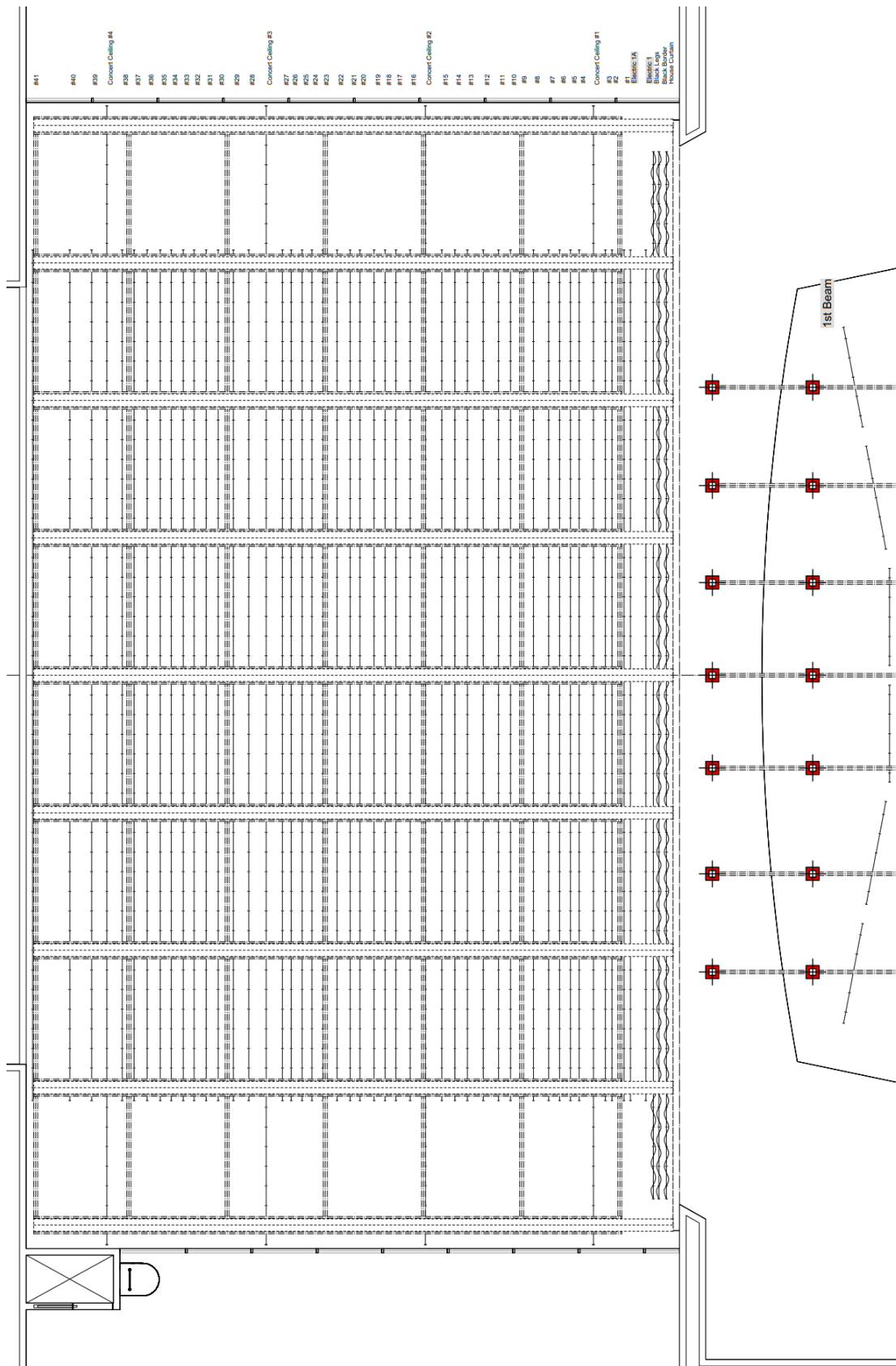
Great Hall with Dimensions



Section with Dimensions

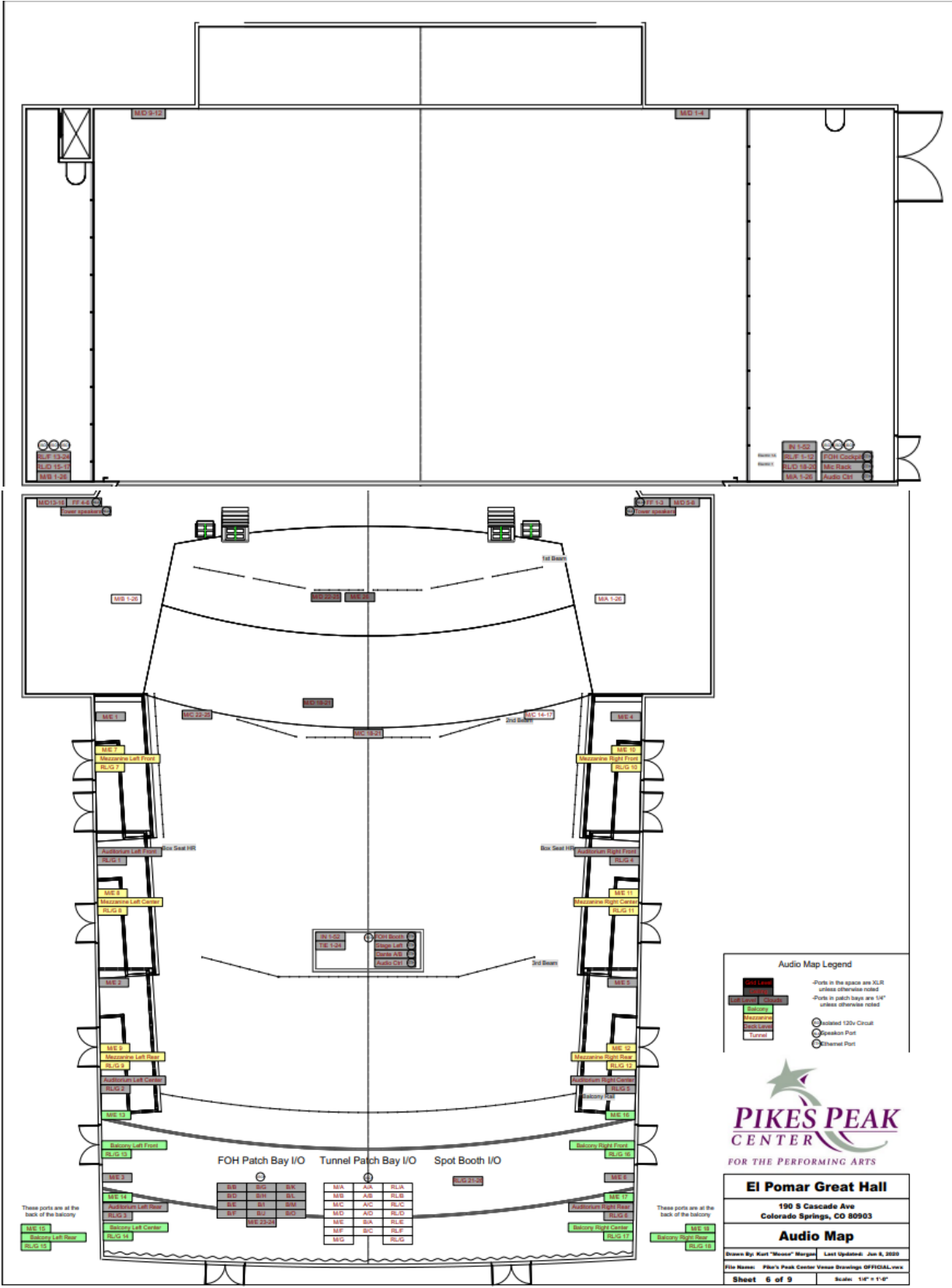


Great Hall Rigging Plot



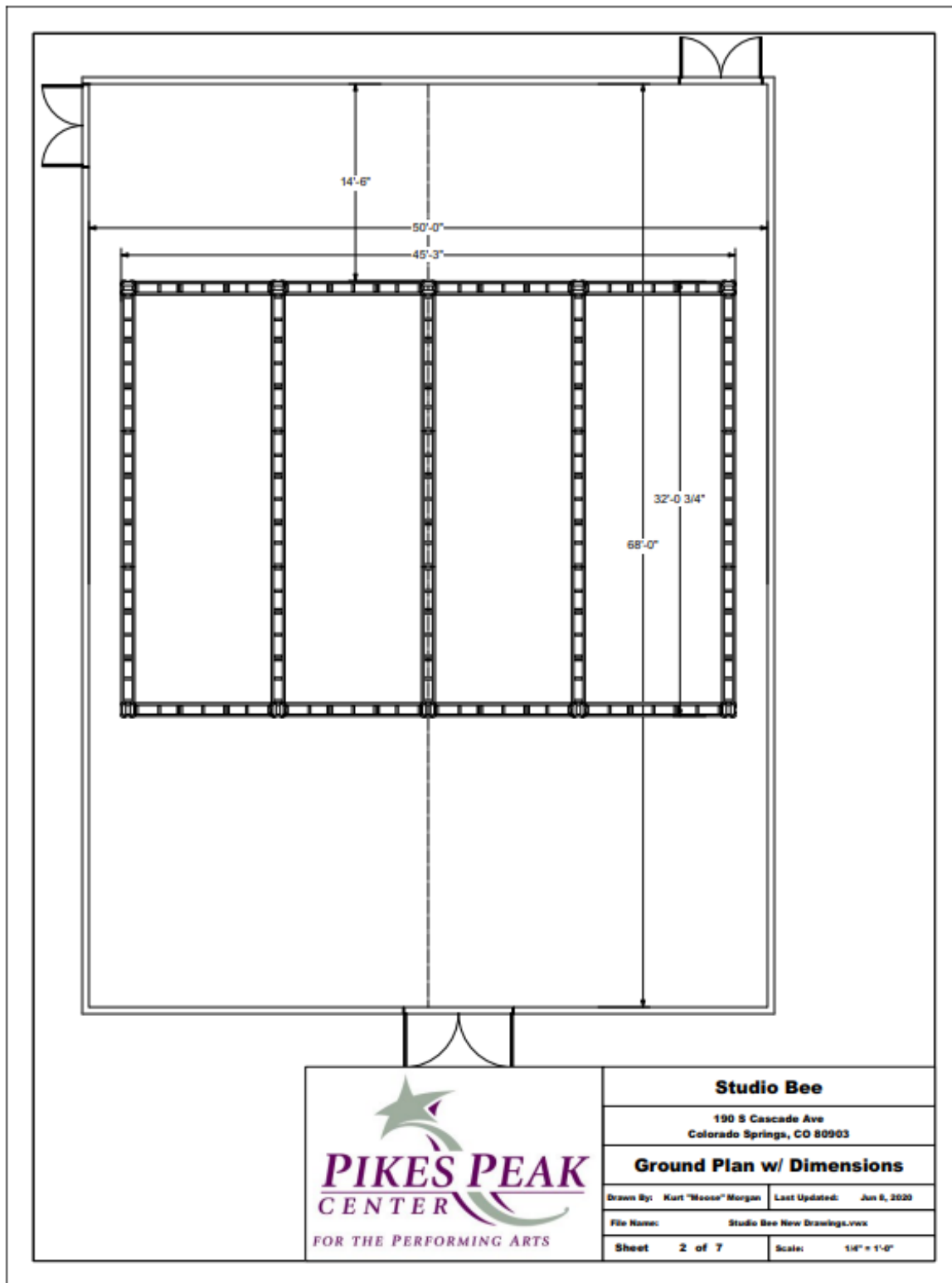
[illegible]

Audio locations

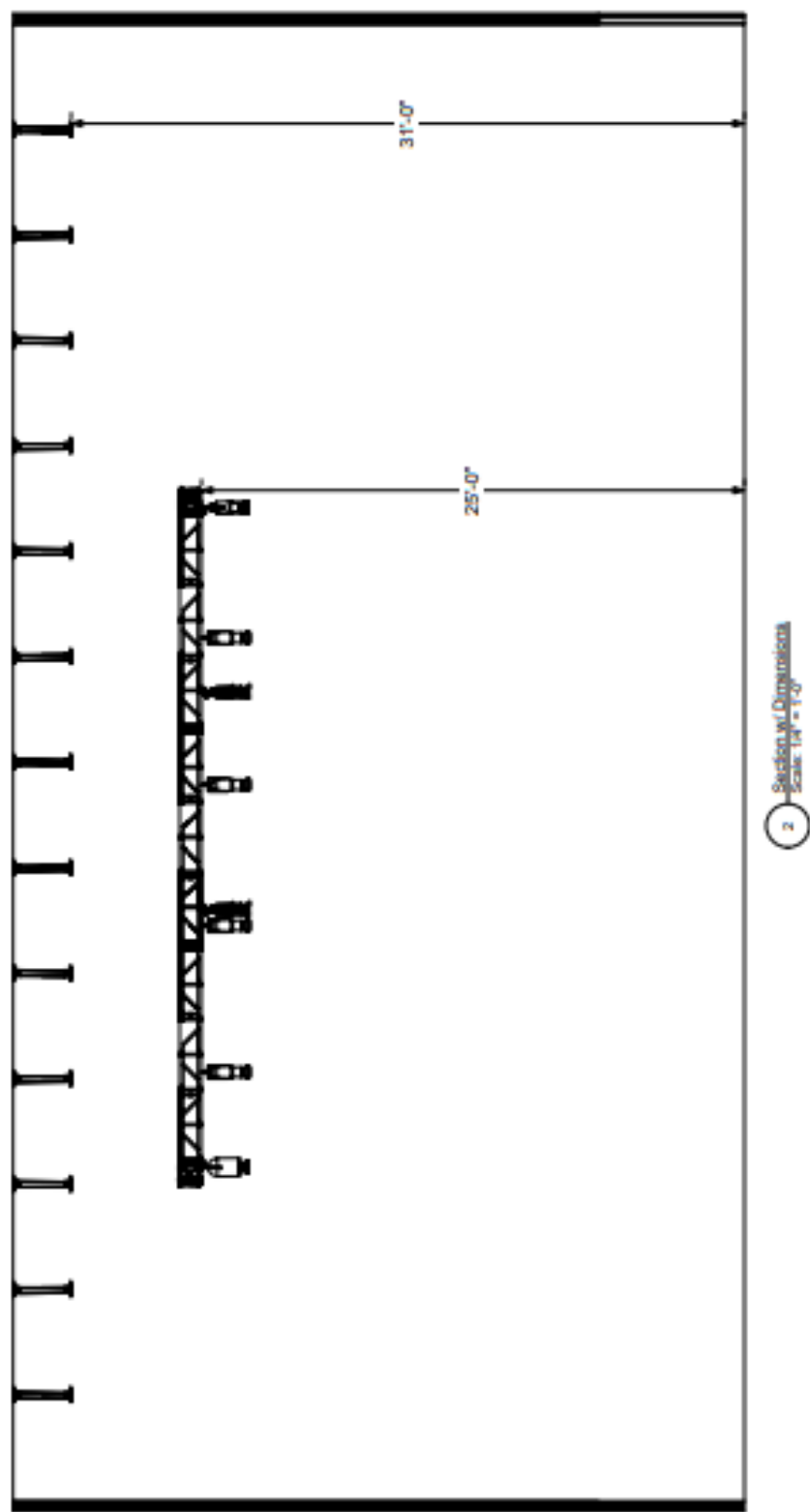


Appendix B – Studio Bee Diagram

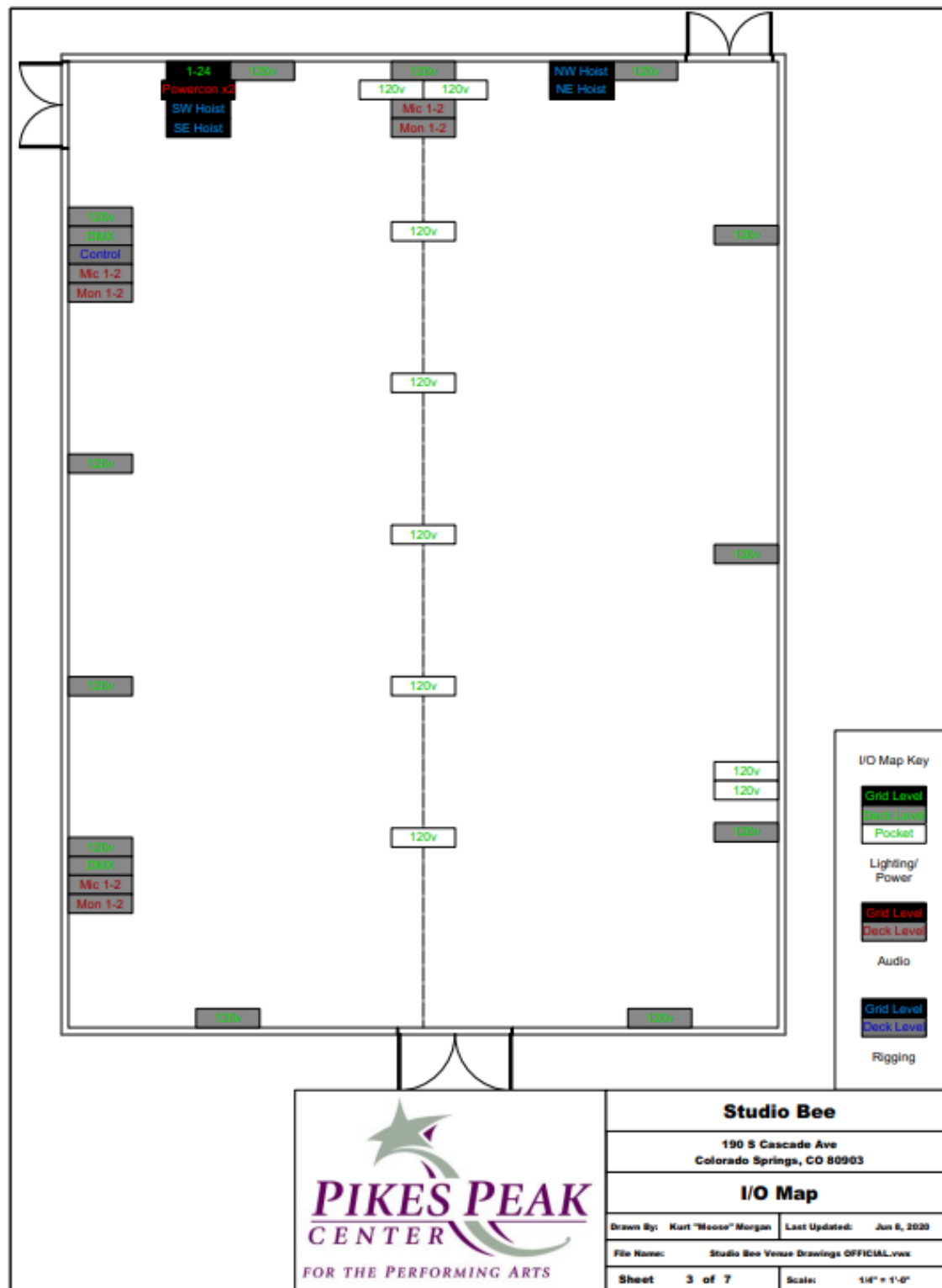
Ground Plan with Dimensions



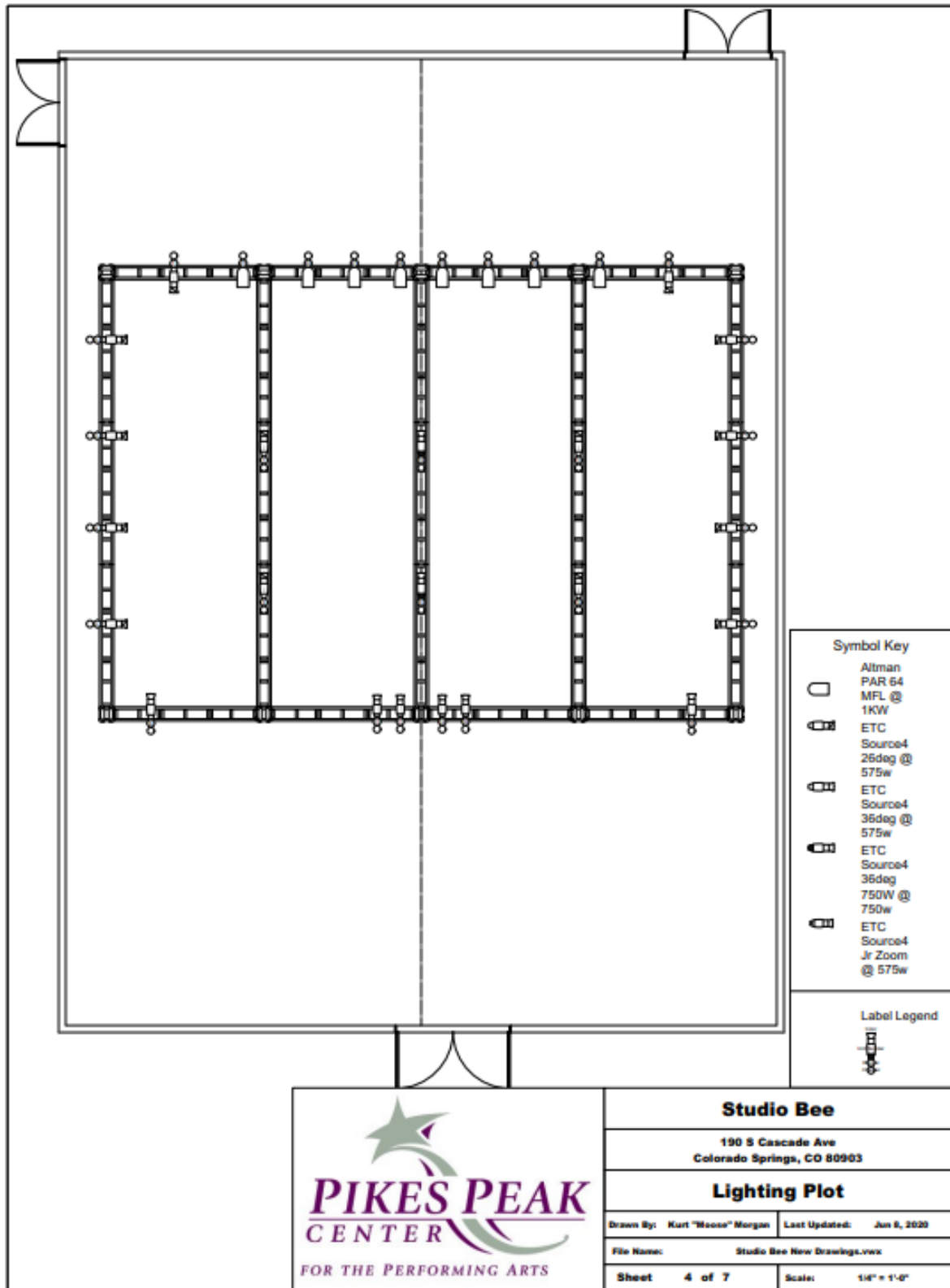
Section with Dimensions



I/O Map



Light Plot (Fixtures not guaranteed to be hung. Please confirm with Event Manager)



Appendix C – Venue Photographs

Main Lobby

Studio Bee Lobby



Mezzanine Lobby



ANB Bank Room

Backstage entrance from street



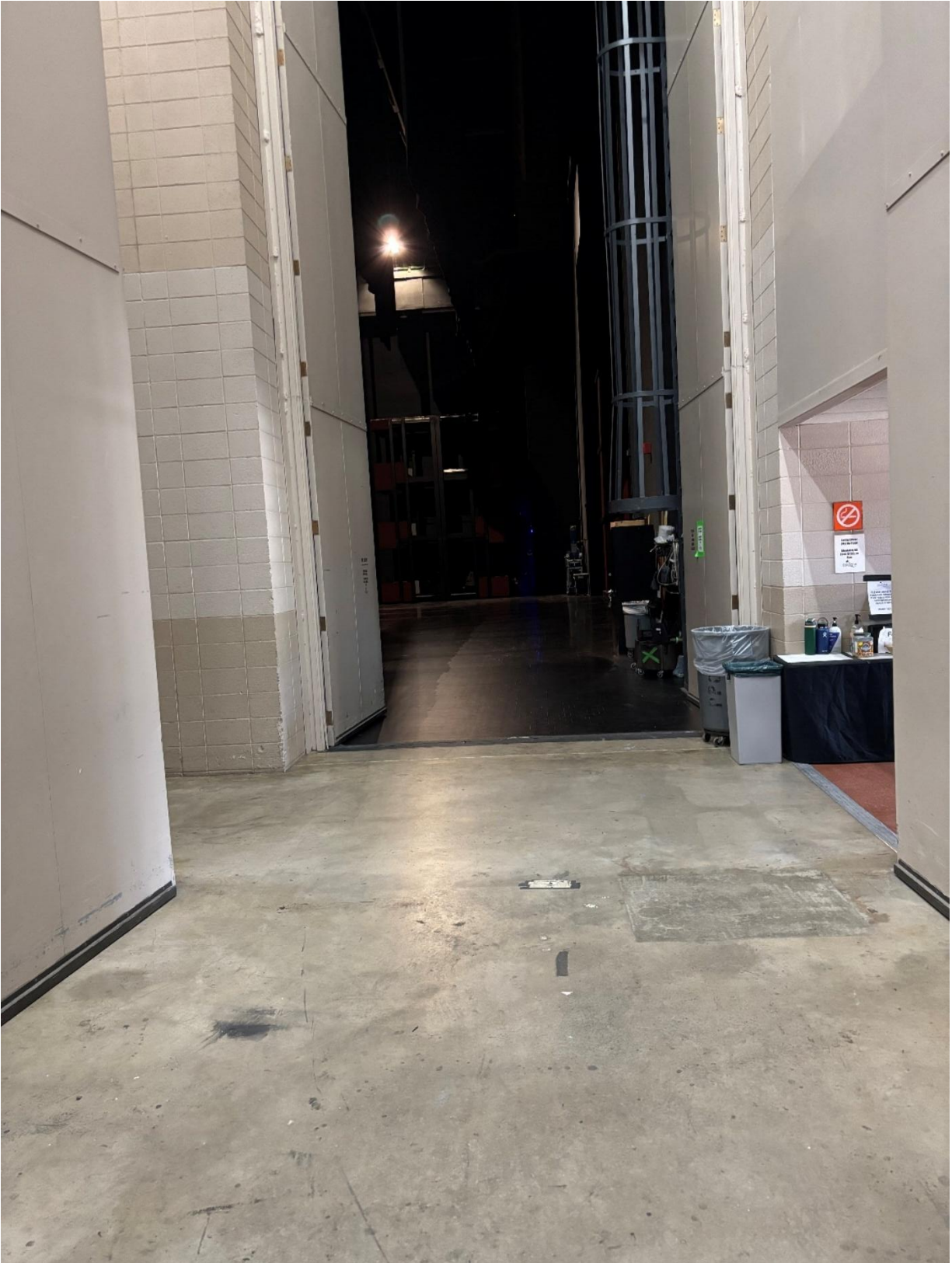
Backstage Hallway



Loading Dock



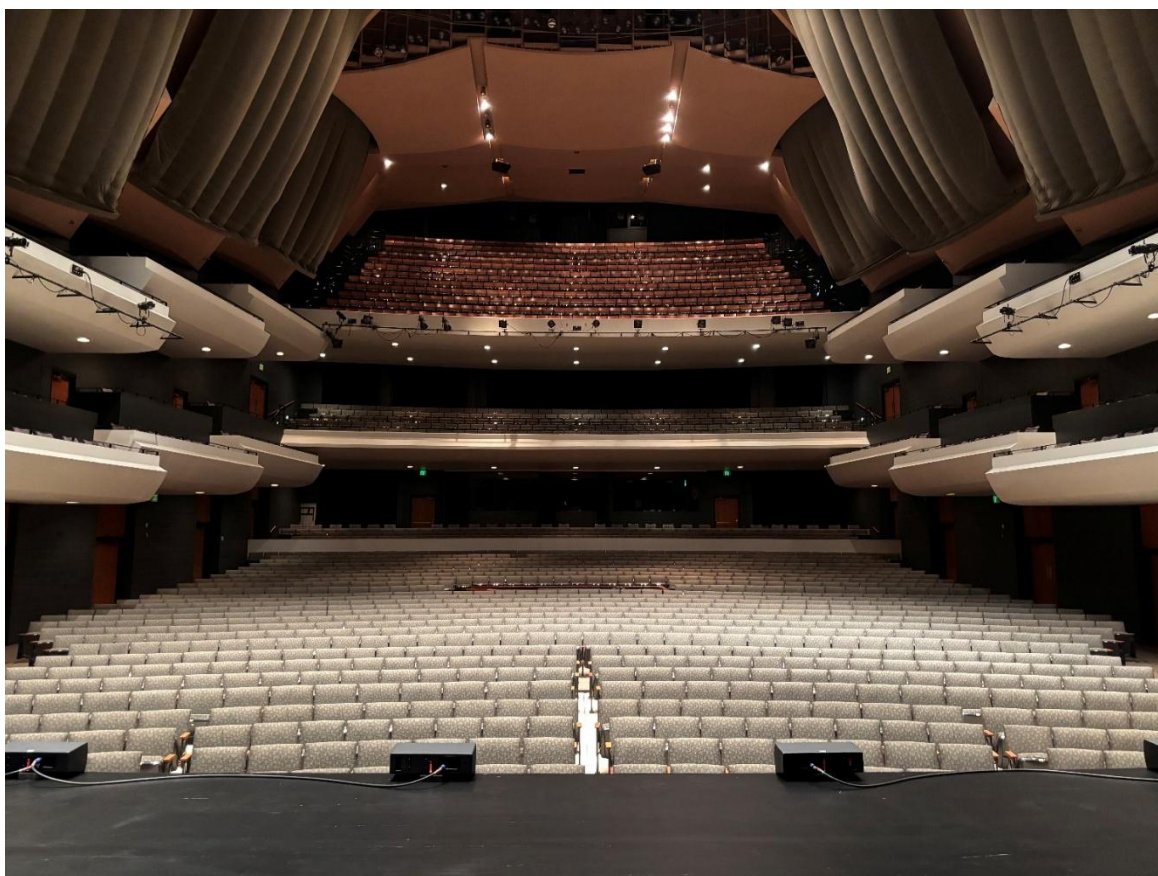
Loading dock to Stage



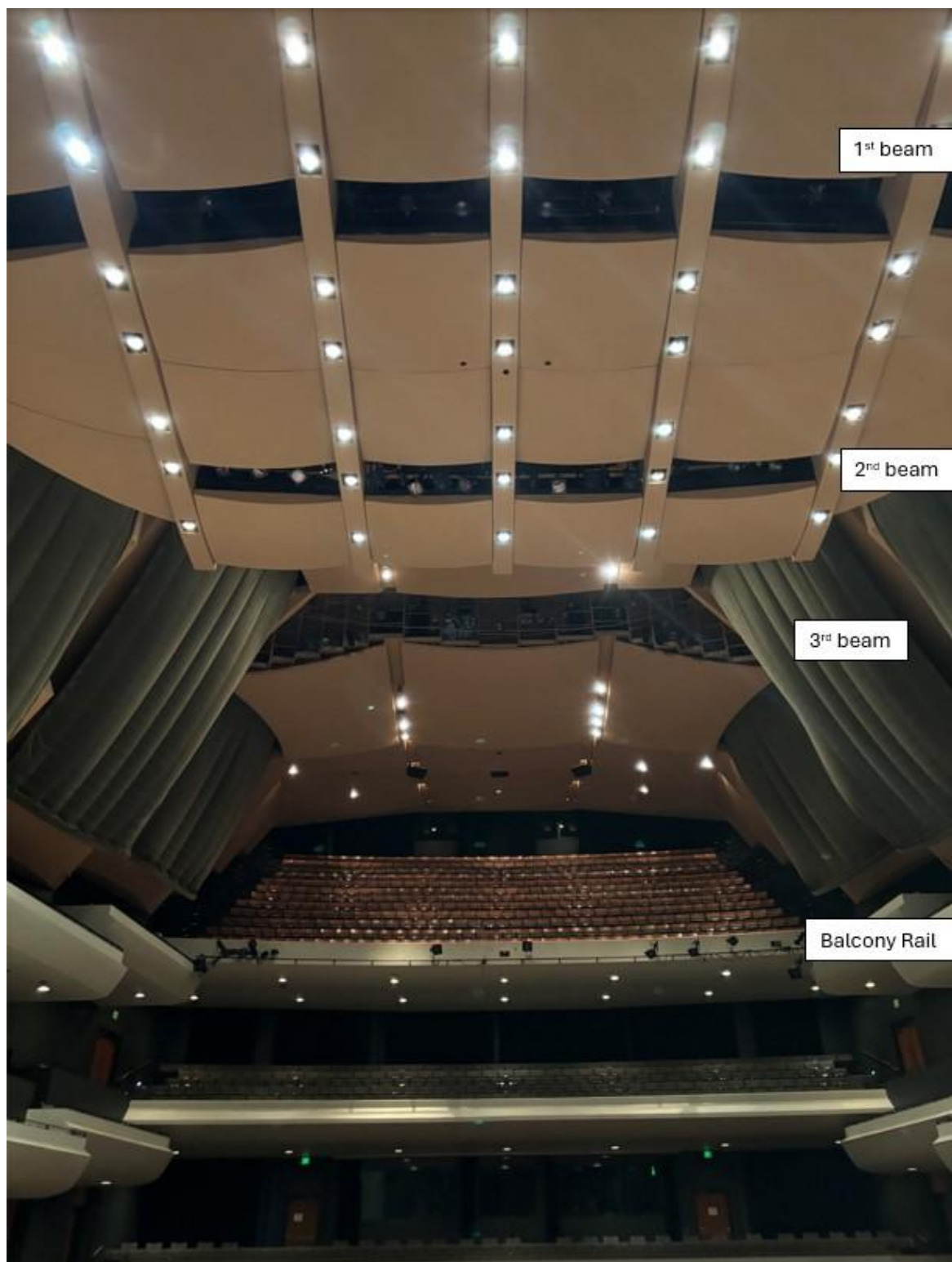
Stage from FOH mix



Great Hall from Stage



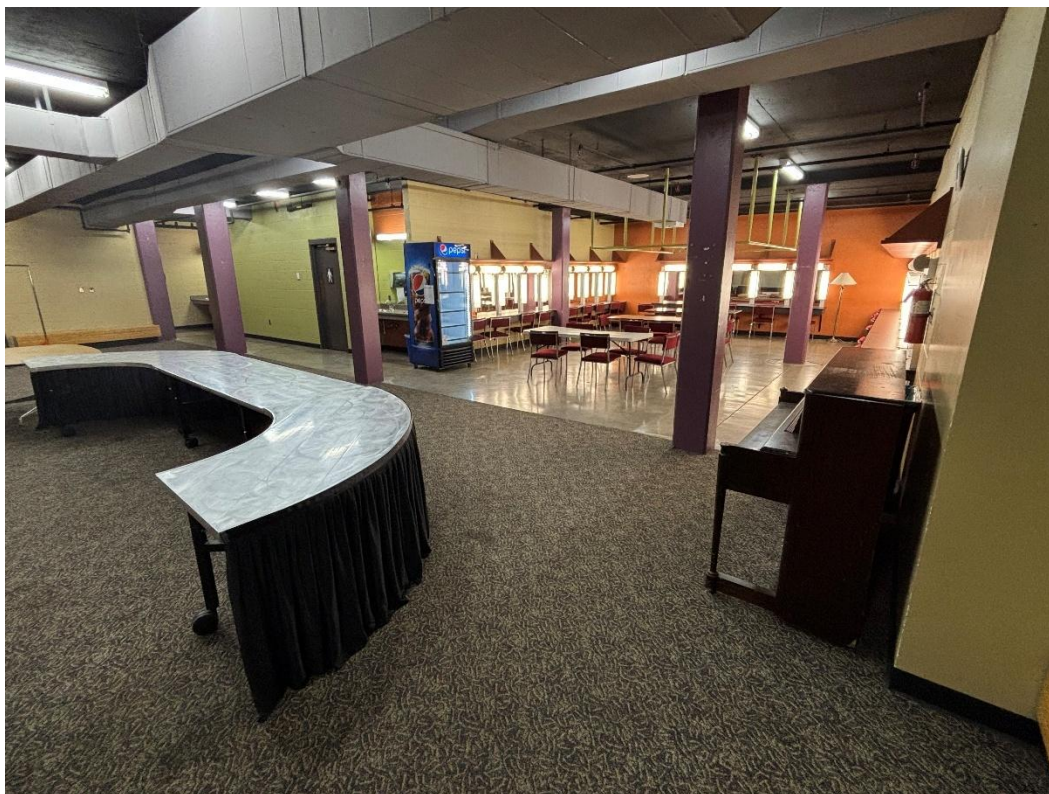
Lighting FOH Positions



Lighting High Side Position



Ensemble Room A – Set up for catering



Ensemble Room B

