



PIKES PEAK CENTER PRODUCTION GUIDE

May 2023 • www.PikesPeakCenter.com



Technical Specifications for The Pikes Peak Center for the Performing Arts

Contents

History and Management	5
Location.....	5
Food and Beverage.....	6
Rules and Regulations with Alcohol.....	6
Merchandise	6
Guest Parking	6
Production Parking.....	6
Load In.....	6
Dressing Rooms.....	7
Studio Bee Black Box Theater	7
Lobby Spaces.....	7
American National Bank Room	7
The El Pomar Great Hall Stage	7
Orchestra Lift.....	8
Towers	8
Fly Rail System.....	8
In House Lighting.....	8
Spotlights	9
Event Power	9
In House Sound System.....	9
Sound System Overview.....	9
Drive Systems	9
Amplification Systems	9
Speaker Systems:.....	9
Program Types.....	10
Proscenium Configuration Volume Limits.....	10
Proscenium Configuration Control Access	10
Drive Systems	11
Front-Of-House (FOH) Mixing System, with Optional Loge Position.....	11



Control Room mixing system	11
Stage monitor mixing system	11
Lobby/House Inputs mixing system	11
Back-stage paging system	11
Amplification Systems	11
Main Stereo, thrust stage, and delayed rear-balcony amplification system	11
Speaker Systems.....	11
Main stereo proscenium speaker system	11
Portable front-fill speaker system	11
Tower-seating ceiling speaker system	11
Delayed rear-balcony speaker system.....	11
Distributed lobby/house speaker system	12
Stage floor-monitors speaker system.....	12
Microphone Compliment.....	12
Soft Goods.....	13
Main Curtain	13
Masking.....	13
Cyclorama/Scrim	13
Risers.....	13
Marley Dance Floor.....	14
Pianos.....	14
Parking Map	15
Parking Map – Site Map	16
Room Layouts.....	17
ANB Bank Room	17
Orchestra Level	18
Orchestra Level with Back of House.....	19
Basement Level with Dressing Rooms	20
Line Set Schedule	21
Lighting inventory	22
Building Items available	23
Building Drawings.....	25



Great hall.....	25
Great Hall with Dimensions	25
Section with Dimensions.....	26
Great Hall Rigging Plot	27
Lighting Plot/Circuit locations	28
Lighting Plot/Circuit locations	28
Audio locations.....	29
Studio Bee.....	30
Ground Plan with Dimensions.....	30
Section with Dimensions.....	31
I/O Map	32
Light Plot	33



The Pikes Peak Center for the Performing Arts

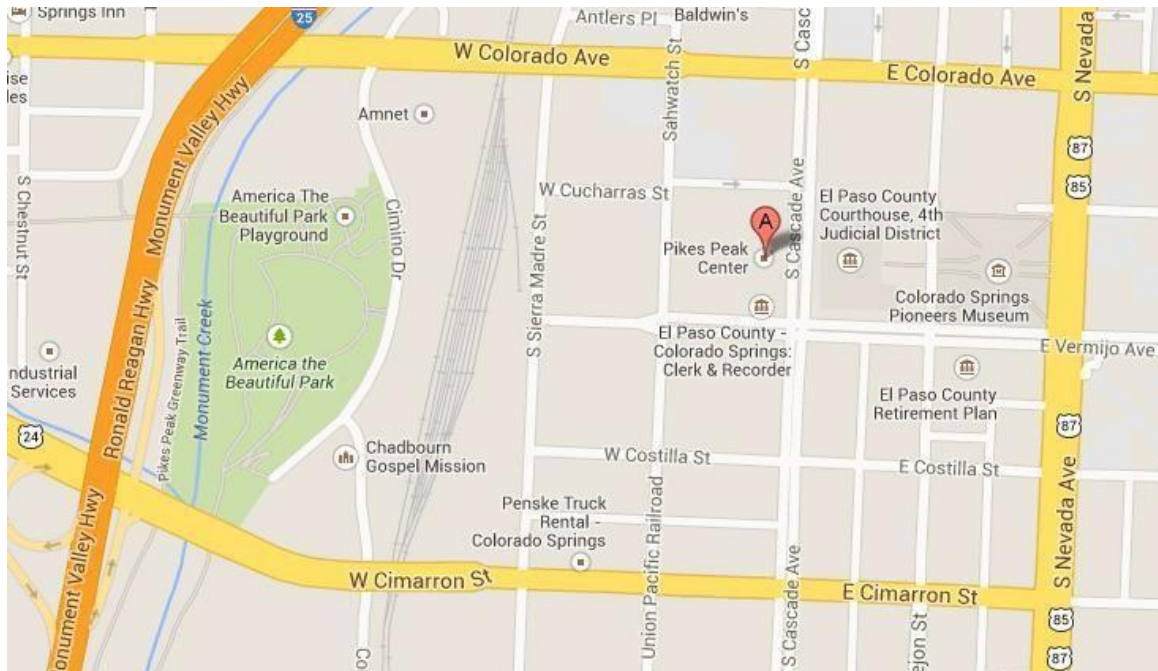
History and Management

The citizens of El Paso County built Pikes Peak Center for the Performing Arts in 1982 to serve as a regional entertainment, cultural, educational, and assembly center for the benefit of the citizens of El Paso County and the Pikes Peak Region. Since its opening in 1982, Pikes Peak Center for the Performing Arts has achieved international acclaim for its design and acoustical qualities. Artists and critics alike have been lavish in their praise of the center. The Broadmoor World Arena is a nonprofit charitable organization that began managing and operating Pikes Peak Center for the Performing Arts in September 2004.

Location

190 South Cascade Avenue, Colorado Springs, CO 80903

Phone: 719-477-2100 Website: <http://www.pikespeakcenter.com/>





Food and Beverage

All food, beverage and concessions are operated and controlled by Sodexo Live!. Together with the Pikes Peak Center, Sodexo Live! will determine the number of stands required to serve the public. All arrangements for serving food and beverages, and all sales of concessions are to be made through Centerplate.

Rules and Regulations with Alcohol

No alcoholic beverages may be brought into the Pikes Peak Center. Alcoholic beverages may be sold during certain events. All alcoholic beverages are to be provided by Centerplate. Alcoholic beverages are permitted in designated or licensed areas only. No alcoholic beverages may be consumed in the parking lot.

Merchandise

Merchandise will be inventoried in and out and sold by the Pikes Peak Center staff. Net sales shall be gross receipts less associated expenses, including security, staffing, taxes, credit card fees, and merchandise percentage. Pikes Peak Center will collect sales tax.

Guest Parking

Pikes Peak Center does not own or manage any parking other than the two (2) loading dock spaces for production load in and load out. There are multiple parking options available for both guests and clients:

El Paso County Parking Garage: Paid parking is available in the secured, covered El Paso County parking garage located on the south side of Pikes Peak Center at Sahwatch St and Vermijo. The garage is open 24 hours a day and 7 days a week. Handicapped parking spaces are available on each level of the parking garage. There are approximately 225 parking spaces available to the public.

Metered Parking: Meters are active Monday thru Saturday 8 am-10 pm and Sundays 1 pm-10 pm. Metered Parking surrounds Pikes Peak Center on Cascade Ave. Sahwatch St. Colorado, and Vermijo.

Production Parking

Pikes Peak Center has two (2) Loading Dock Parking Spaces on the West side of the building on the corner of Sahwatch St. and West Cucharas St. All other parking is public on-street parking both metered and free. There are metered spaces directly outside of the backstage door. Meters can be pre-paid or “hooded” for a fee. Please contact us at least 7 days prior to the event to have those meters pre-paid. Meters must be paid Monday thru Saturday 8 am-10 pm and Sundays 1 pm-10 pm. Shore power is available for a fee and can be placed at the street end of the dock for use by buses parked on the street. Extra bus or truck parking spaces are available about one (1) block from Pikes Peak Center.

Load In

The Stage entrance is located on the west side (Mountain Side) of Pikes Peak Center at the corner of Sahwatch St. and W. Cucharas St.



There are two (2) loading docks at the Pikes Peak Center. The Docks are at a fixed height of 48" with edge of dock levelers.

There is a 20' level push from the Dock to the Pikes Peak Center Main Stage and a 50' level push to Studio Bee.

Dressing Rooms (Please see attached for ground plan)

Six (6) star dressing rooms are located outside the up-stage wall off the main stage. Each dressing room is equipped with a make-up station, toilet, sink, and shower. The basement level has two chorus dressing rooms (A=2,000 sq ft with 24 Make-up stations)(B=1,800 sq ft with 31 Makeup Stations). Each chorus room is equipped with make-up stations, sinks, showers, and toilets. A 490 sq. ft. common space is located on the lower level adjacent to the chorus dressing rooms. Show washers and dryers are available upon request. Hard-wired phones or internet can be provided in the dressing rooms with advanced notice.

Studio Bee Black Box Theater (Please see attached for ground plan)

This 50'x68' space is surrounded by black velour drapes and features a moveable lighting grid. Studio Bee has a full theatrical lighting and sound system and it is a perfect setting for meetings, receptions, and intimate drama, music, and dance performances. Studio Bee features a beautiful, refinished wooden floor and a separate entrance, lobby, and restroom area from the Great Hall. A soundproof design permits Studio Bee activities to be held simultaneously with events in the Great Hall. Capacity is around 200 depending on the configuration.

Lobby Spaces (Please see attached for ground plan)

We have lobby spaces in the Studio Bee Lobby, Great Hall Lobby and the Mezzanine Lobby.

American National Bank Room (Please see attached for ground plan)

On the Mezzanine level of Pikes Peak Center we have a room where we host parties and pre-show dinners. Capacity is around 72 depending on the configuration.

The El Pomar Great Hall Stage (Please see attached for ground plan)

The stage floor is maple over plywood, over two layers of sleepers, over neoprene blocks. The floor is painted black and has excellent resiliency for ballet and other dance events. Prior approval must be given before lagging or screwing into the floor. The center is equipped with a semi-rigid proscenium safety curtain to close off the stage in the event of on-stage fire. The fire curtain is designed to operate under emergency or maintenance conditions. The fire line must not have stage pieces directly underneath or crossing the line as it may have to come down in an emergency. Beyond the fire line the stage is on a rake of 6 degrees to the downstage edge. The maximum allowable load on the floor is 160 lbs/sq. ft.



Upstage Towers/Wall to the Plaster Line = 52 ft.

To Down Stage Edge = 58 ft.

To Down Stage Edge of 1st Lift = 74 ft.

To Down Stage Edge of 2nd lift = 88 ft.

Stage Left to Stage Right = 115 ft. Live Load = 160 lbs/sq ft.

Proscenium opening = 81ft Wide x 40'High. Distance from Proscenium to the Down Stage Edge 6ft.

Orchestra Lift

The Pikes Peak Center features a full size orchestra pit with complete access to the backstage area. It consists of two sections 64'W x 12'D that can be raised to the stage floor, house floor, and pit floor. These lifts can be lowered to the pit level and used as an orchestra pit, loaded with seating, raised to the house floor, or raised to stage level to extend the downstage edge.

Towers

Pikes Peak Center has mobile towers built for extra seating and to be used as a concert shell. These towers are moved using an air caster system. There are six (6) throat towers, three (3) on Stage Left and three (3) on Stage Right. There are on stage towers, two (2) towers stored on the Stage Left wall and three (3) on the Stage Right Wall. Five (5) more towers are stored along the Up Stage wall. The Throat towers can not be moved off stage. Additionally, we have (2) stair units to use if we seat the stage towers.

The On Stage Towers typically stay in their storage position along the upstage and stage left and right walls. They are used by orchestras and choirs as a concert shell using a curved upstage configuration. These towers can only be used for upstage seating if set in a straight line.

Fly Rail System

Pikes Peak Center has a single purchase Flyrail system. The Flyrail and Load rail are located on a Stage Right Loft.

The capacity of each arbor is 1,500 lbs. The full arbor capacity is 40,000 lbs.

Please see attached for Rigging information and a line set schedule. Please contact us for additional information.

In House Lighting

The control board is an ETC ION Dimmer per circuit configuration with 345 @ 2.4kw, 30 @ 6.0kw. non-dims available: 6 @ 2.4kw and 6 @ 6.0kw. All patching is DMX through the lighting control Board. In house Console is an ETC Ion. We have conventional fixtures such as Par cans, Source Four Ellipsoidal fixtures with 10, 19, 26 and 36 degree barrels. We also have Source 4 Please contact us for specific inventories. Please contact us for a current lighting plot.



Spotlights

The Pikes Peak Center is equipped with two Strong Xenon Super Troupers 2Ks located in a booth at the rear of the balcony. The throw is 150' to the front edge of the stage. We are able to outsource two additional spot lights if necessary.

Event Power

The company switch is located stage left. Available power consists of four company switches. Each switch is 3 phase, 4 wire, 120/128v 60hz, one circuit that is 300 amps/phase. The connection is with lugs. The house transfer panel, located adjacent to the company switch, permits control of 108 FOH circuits by road boards. That transfer panel is only accessed through the Head Sound, Head Lights or the steward.

In House Sound System

Sound System Overview

The sound system for the Great Hall of Pikes Peak Center consists of the following subsystems:

Drive Systems

- 1) Front-Of-House (FOH) main mixing system, with optional Loge position
- 2) Control room mixing system – Allen and Heath GL 4000
- 3) Stage monitor mixing system
- 4) Lobby/House-inputs mixing system
- 5) Back-stage paging system

Amplification Systems

- 1) Main Stereo, thrust stage, and delayed rear-balcony amplification system
- 2) Tower, front-fill, and back-stage paging amplification system
- 3) Distributed lobby/house amplification system
- 4) Stage floor-monitor amplification system

Speaker Systems:

- 1) Main stereo proscenium speaker system
- 2) Thrust-stage mono symphony accompaniment speaker system
- 3) Portable front-fill speaker system
- 4) Tower-seating ceiling speaker system
- 5) Delayed rear-balcony speaker system flown to 26'2"
- 6) Distributed lobby/house speaker system flown to 24'



7) Stage floor-monitors speaker system

8) Back-stage-paging system

9) Stereo mixing-location monitor-speaker pair

Program Types

This configuration is intended for the following program types:

1) High volume performances

2) Performances that can be positioned on the stage below and behind the proscenium

3) Performances that require most live sources to be reinforced with microphones

Proscenium Configuration Volume Limits

The sound volume limit using the Proscenium Configuration is the OSHA standard for 2-hour exposure limit of 100 dBA, slow response, measured at the FOH mix position.

In the case of sustained, low-end driven music, the client may want to supplement the Proscenium Configuration subwoofers with additional stage-stacked 18" subwoofer cabinets. The Pikes Peak Center does have (4) dual 18" subwoofer cabinets used primarily for Studio Bee that may be employed for these types of shows.

Visiting Performers will have access to overall graphic and/or parametric output equalization, as well as sourceEQ, compression, and limiting for the overall sound program, main, and monitor speaker systems. These parameters are accessible on the FOH digital mixing console, and the floor–monitor digital mixing console.

Crossovers, HPF/LPF, and driver alignment for the mains and monitor speaker systems, EQ, delay, and synchronized levels for speaker subsystems are not accessible to the guest audio technician. These speaker systems sound great right from the start and have been carefully aligned in time and level to the main speakers. Please take the time to critically listen to the system as is before requesting control over parameters that cannot be improved.

Proscenium Configuration Control Access

Pikes Peak Center's Great Hall sound system has (2) system-control-access points. They are all-in-one PCs with a mouse and keyboard each, and are located at the audio control room, and the FOH digital mixing console in either the FOH or Loge positions. These control points provide the following primary functions:

1) Switching between the Proscenium and Thrust-stage configurations

2) Switching between L+R- or Aux-fed subwoofers

3) Muting and unmuting various speaker subsystems

4) Routing and level control of walk-in music sources



5) Making lobby/house pages via the paging microphone in the control room and off-stage right

6) Routing and un-routing the program feed into the back-stage paging system

7) Monitoring the health of the entire Great Hall sound system

Drive Systems

Front-Of-House (FOH) Mixing System, with Optional Loge Position

The FOH main mixing system can be used in either the center of the house orchestra level position, or in the alternate Loge position located in the house-right loge location. All required connections are accessible at either location.

1 Midas Pro X-CC-TP 56X16 I/O digital mixing console

Control Room mixing system

1 Allen & Heath GL-4000-24 analog mixing console

Stage monitor mixing system

1 Midas Pro 2-CC-PP 56X16 I/O digital mixing console

Lobby/House Inputs mixing system

1 BSS London 326/806 DSP system

Back-stage paging system

1 BSS London 326/806 DSP system

Amplification Systems

Main Stereo, thrust stage, and delayed rear-balcony amplification system

16 Crown I-Tech 4X3500HD 4-ch. network amplifiers

2 Crown I-Tech 5000HD 2-ch. network amplifiers

Speaker Systems

Main stereo proscenium speaker system

20 VTX-V20 10" 3-way passive tri-amped line-array cabinets

12 VTX-S25 dual-15" passive cardioid subwoofer cabinets

Portable front-fill speaker system

6 JBL AC26 6" 2-way passive full-range cabinets

Tower-seating ceiling speaker system

18 JBL Control 226B/T 6.5" passive co-axial, high-power ceiling speakers

Delayed rear-balcony speaker system

3 JBL AM5212-00 12" 2-way passive full-range cabinets



Distributed lobby/house speaker system

1 lot OSE JBL ceiling and Control series passive cabinets

Stage floor-monitors speaker system

4 Clair Brothers WEDGE-PL 12" 2-way passive left-hand floor monitor

4 Clair Brothers WEDGE-PR 12" 2-way passive right-hand floor monitor

Microphone Compliment

4 AKG C430 miniature condenser overhead/cymbal microphones

3 Audio Technica ATM 25 dynamic cardioid tom-tom drum microphones

2 Audio Technica U857Q gooseneck microphones

1 Audix D6 dynamic cardioid kick-drum microphone

2 Audix D2 dynamic hyper-cardioid rack-tom microphones

1 Audix D4 dynamic hyper-cardioid floor-tom microphone

1 Audix i5 dynamic cardioid snare-drum microphone

2 Audix ADX51 miniature condenser overhead cymbal microphones

4 Audix OM7 dynamic hyper-cardioid vocal microphones

1 pair Audix SCX25A large-diaphragm cardioid condenser piano microphone system

2 Beyer Dynamic TG V90R ribbon vocal microphones

4 Countryman H6 headset microphones (for Shure wireless belt packs)

2 Crown PZM 6LPB boundary condenser microphones

2 Crown PZM 160 boundary condenser microphones

4 EV RE20 dynamic instrument microphones

2 Shure Beta 52 dynamic kick-drum microphones

8 Shure KSM9 super/cardioid condenser vocal microphone modules (for Shure wireless system)

2 Shure KSM9 super/cardioid condenser vocal microphones

2 Shure KSM32 side-address large-diaphragm condenser instrument microphones

4 Shure MX185 lapel condenser microphones (for Shure wireless belt packs)

5 Shure SM57 dynamic cardioid instrument microphones

9 Shure SM58 dynamic cardioid vocal microphones



4 Shure SM81 cardioid pencil condenser instrument microphones

Soft Goods

Main Curtain

Located directly upstage of the proscenium, the main curtain, its operation is either motorized fly (50' per minute) or hand drawn from stage right. The main curtain is sage green in color and 86'W x 43'H.

Masking

- 8 sets of black velour legs (8'-9WX52'H)
- 5 black velour borders (65'WX12'H)
- 2 sets of black velour stage drapes (each panel is 28'-6WX43'H, 4 panels total)

Cyclorama/Scrim

- 1 Natural white Cyclorama (65'WX52'H)
- 1 Natural White Scrim (65'WX30H)
- 1 Black Scrim (65'WX30H)

Risers

- Wenger Trouper Seated Chorale Risers: Maximum Capacity Arrangement: 116 seats (Does not include space on ground in front of the riser)
- Textured hard Black Surface: 3'x8' decks
- Sico Risers: 6'x8' decks
- Black top solid surface: 4'x8' decks
 - Variable height on legs from 8" to 48" from the top of the stage floor



Black Box Theater Riser Inventory 4/25/2023

Equipment	Size (to make)	Size (Actual)	Quantity	Color code
Decks	4' x 8'		60	
Legs	8"	6 7/8"	48	None
Legs	12"	10 7/8"	16	Green
Legs	16"	14 7/8"	15	Purple
Legs	24"	22 7/8"	15	Brown
Legs	32"	30 7/8"	16	White
Legs	36"	34 7/8"	109	None
Legs	40"	38 7/8"	15	Yellow
Legs	48"	46 7/8"	11	Orange
Legs	55"		15	
Legs	63"		9	
Cheeseboroughs			10	

Marley Dance Floor

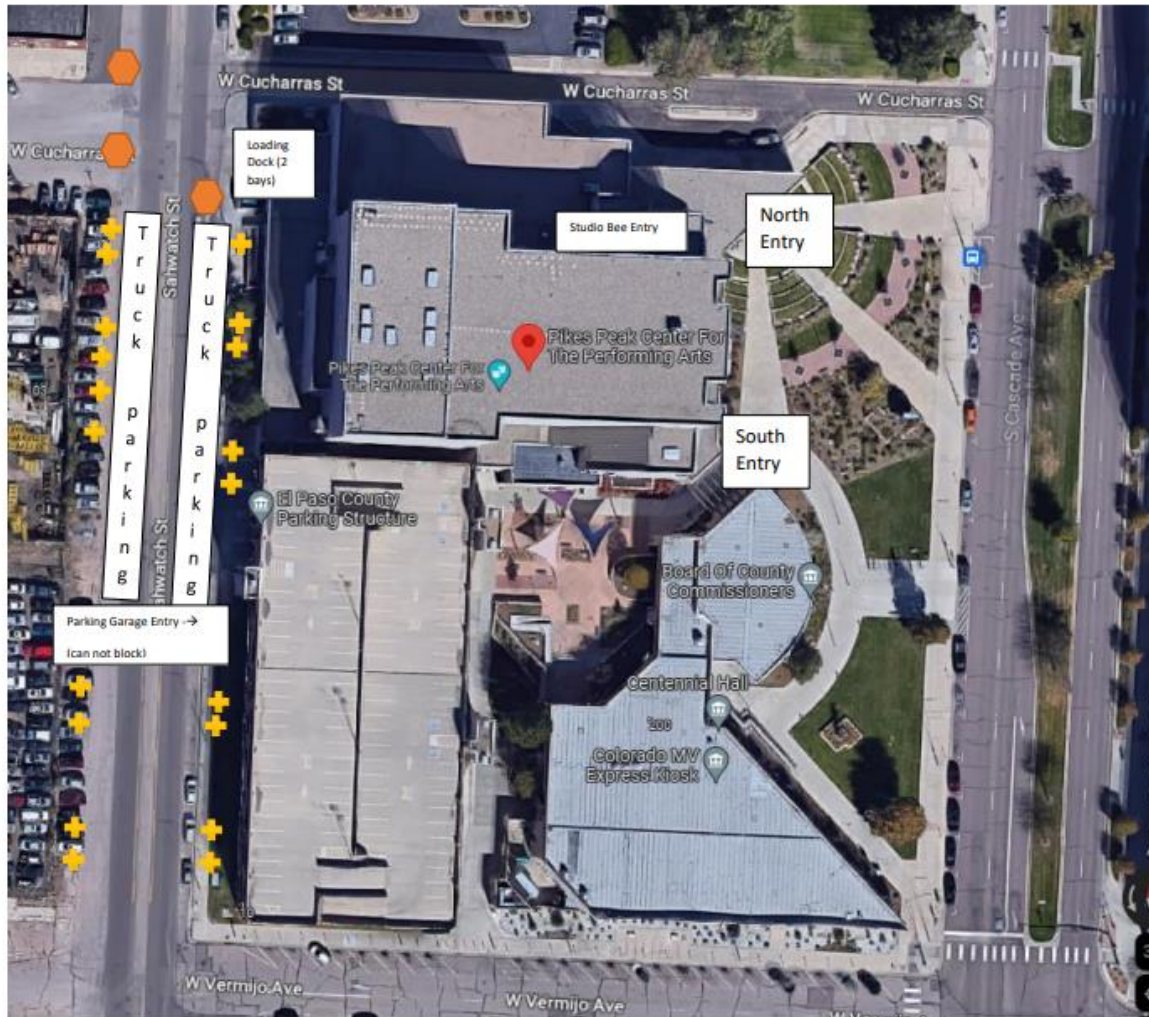
Dimensions: 5'3" x 65' each roll – Total of 7 rolls

- Color: Brown on one side and Gray on the other
- Composition: Vinyl
- Weight: 130 lbs each roll

Pianos

- Baldwin Concert Grand Piano 7'
- Steinway Concert Grand Piano 9'
- 2 Yamaha Upright Grand Pianos

Parking Map

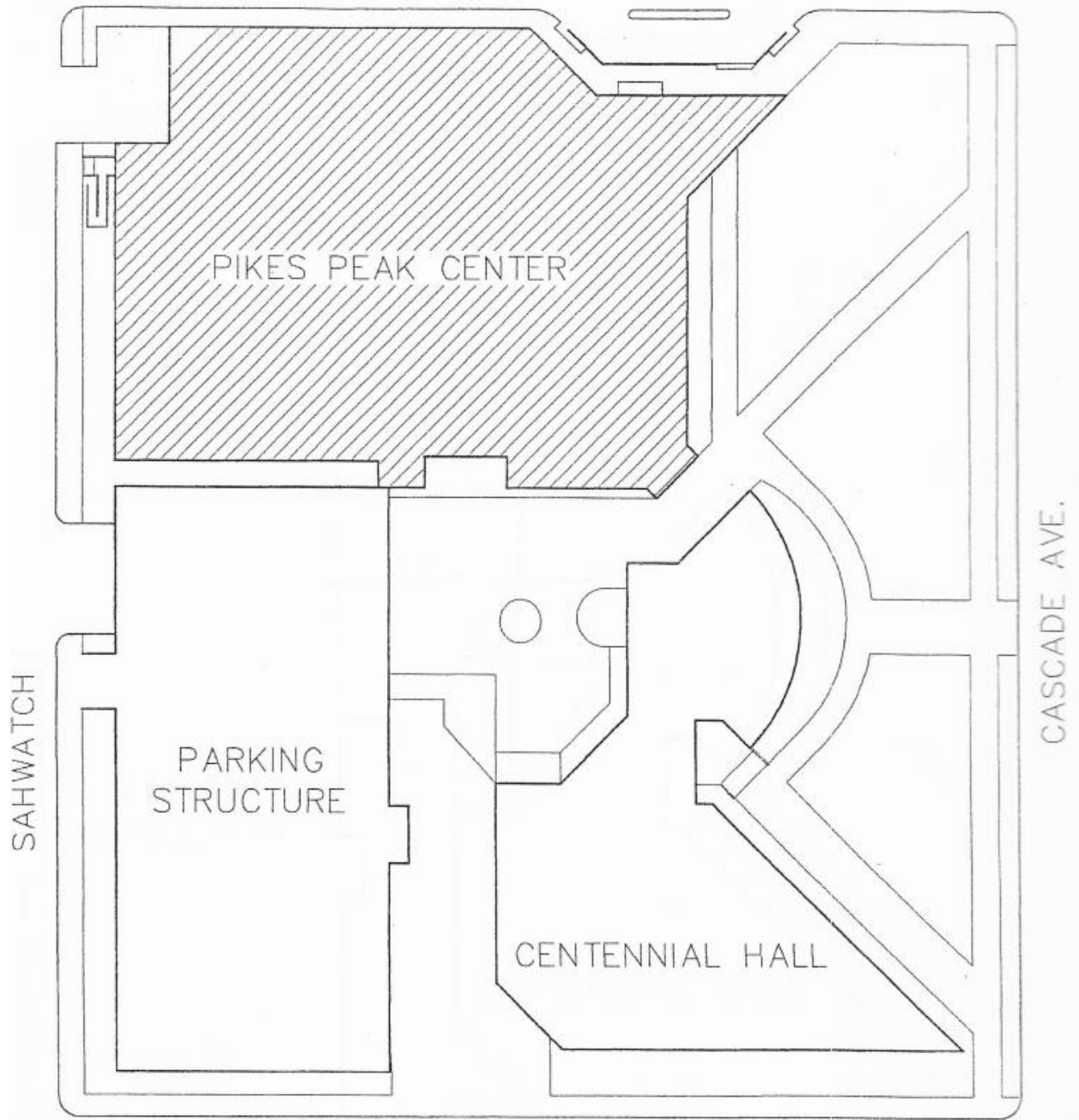


- + Parking meter
- ⬡ Stop Sign

We are able to order parking meter hoods for bus and truck parking in advance. Please ask your event manager.

Any Runner vehicles or touring vehicles must either be parked in the dock or on the street at a meter. You may park and store (2) trucks or buses in the dock, but all others must be on the street. We also prefer that the cabs be removed from 53' trucks while in the dock as they spill out into the intersection.

Parking Map – Site Map

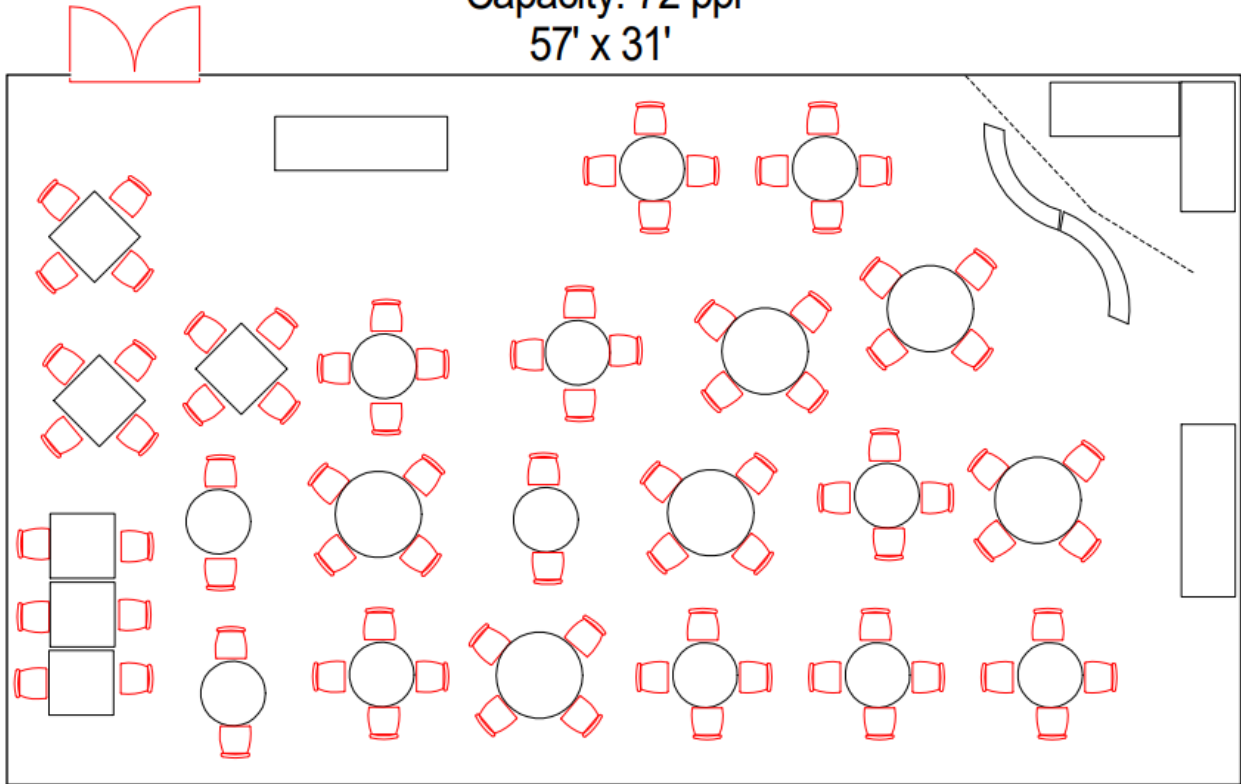


Room Layouts

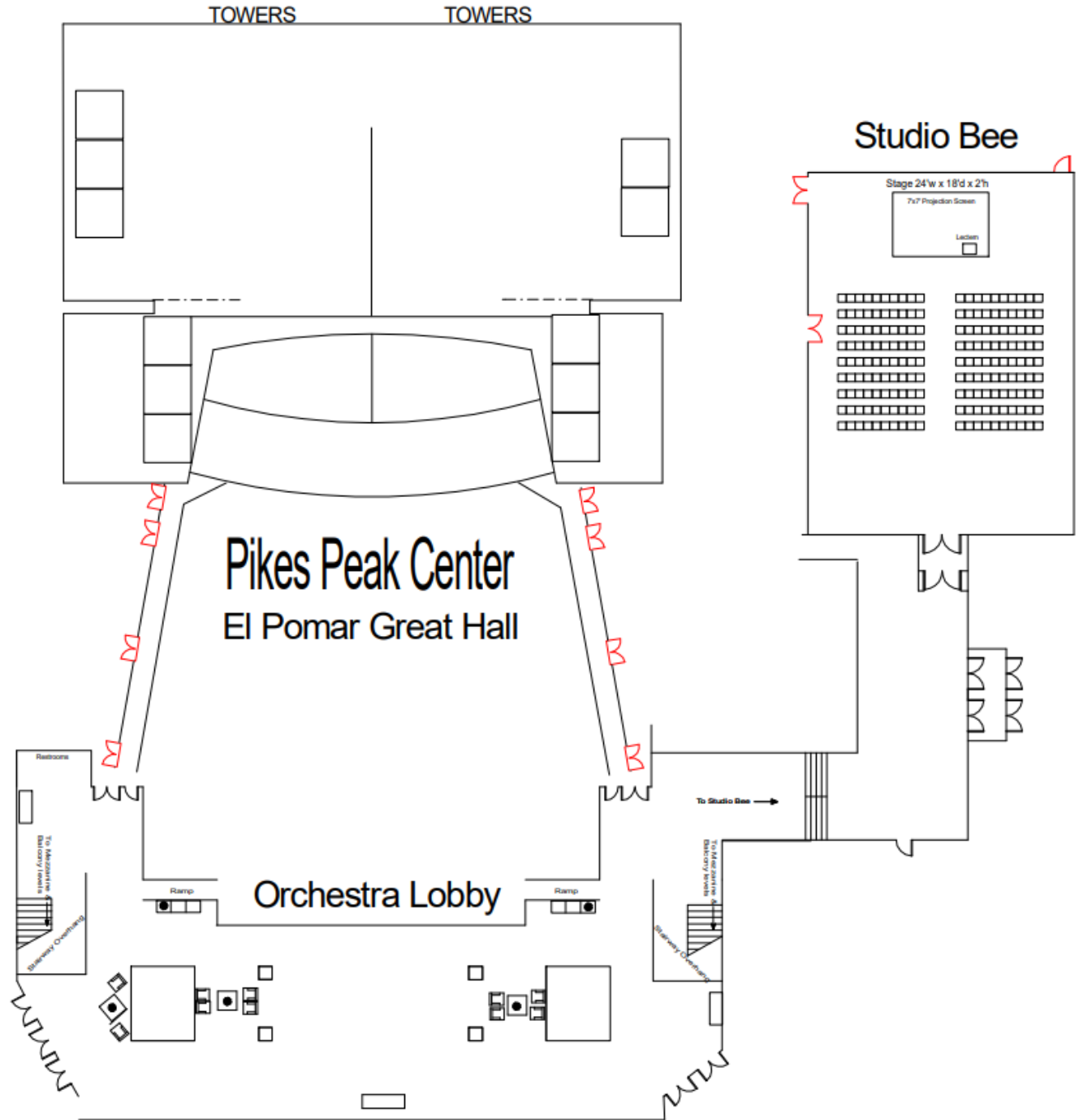
ANB Bank Room

ANB BANK Room

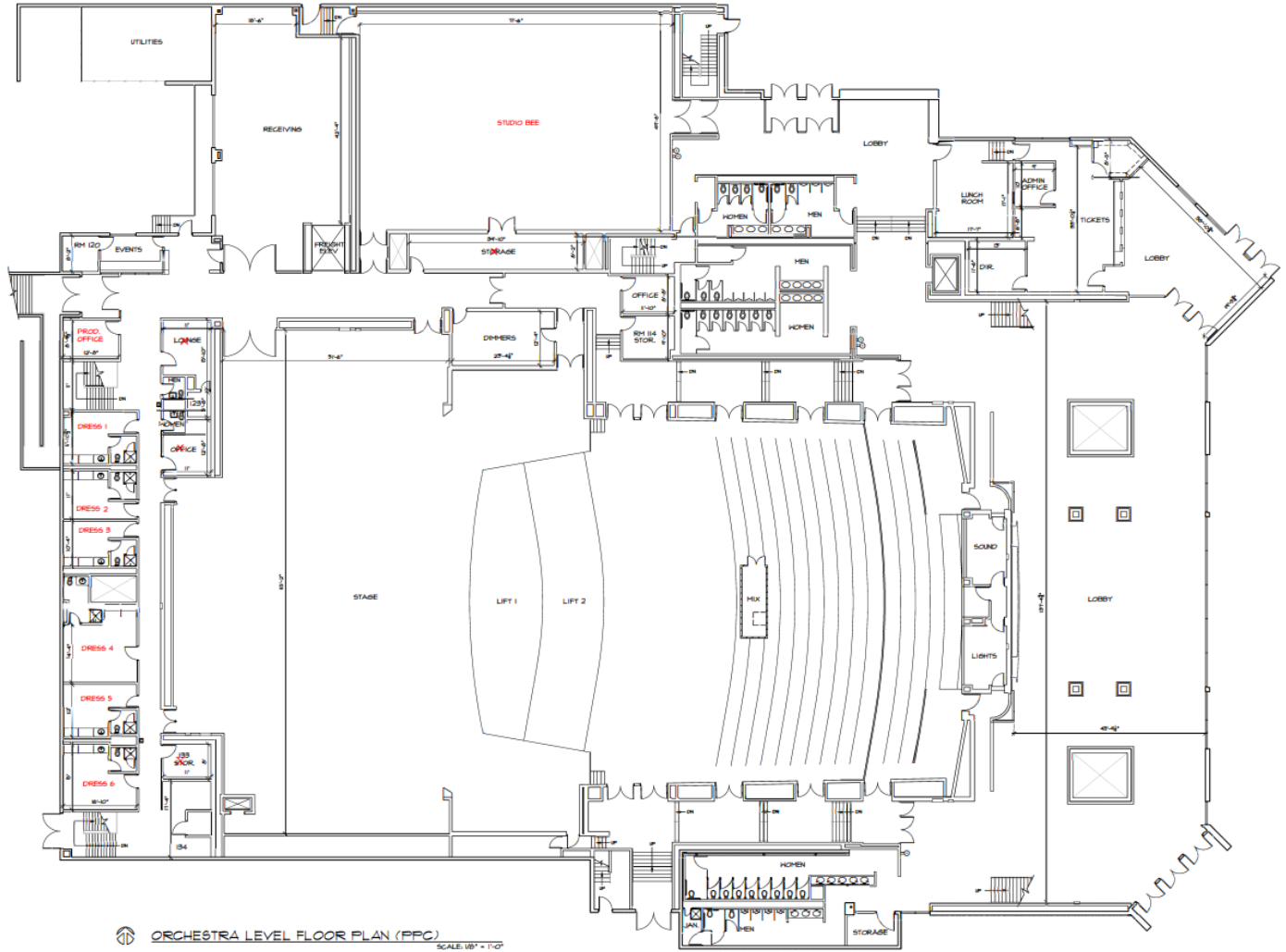
Capacity: 72 ppl
57' x 31'



Orchestra Level

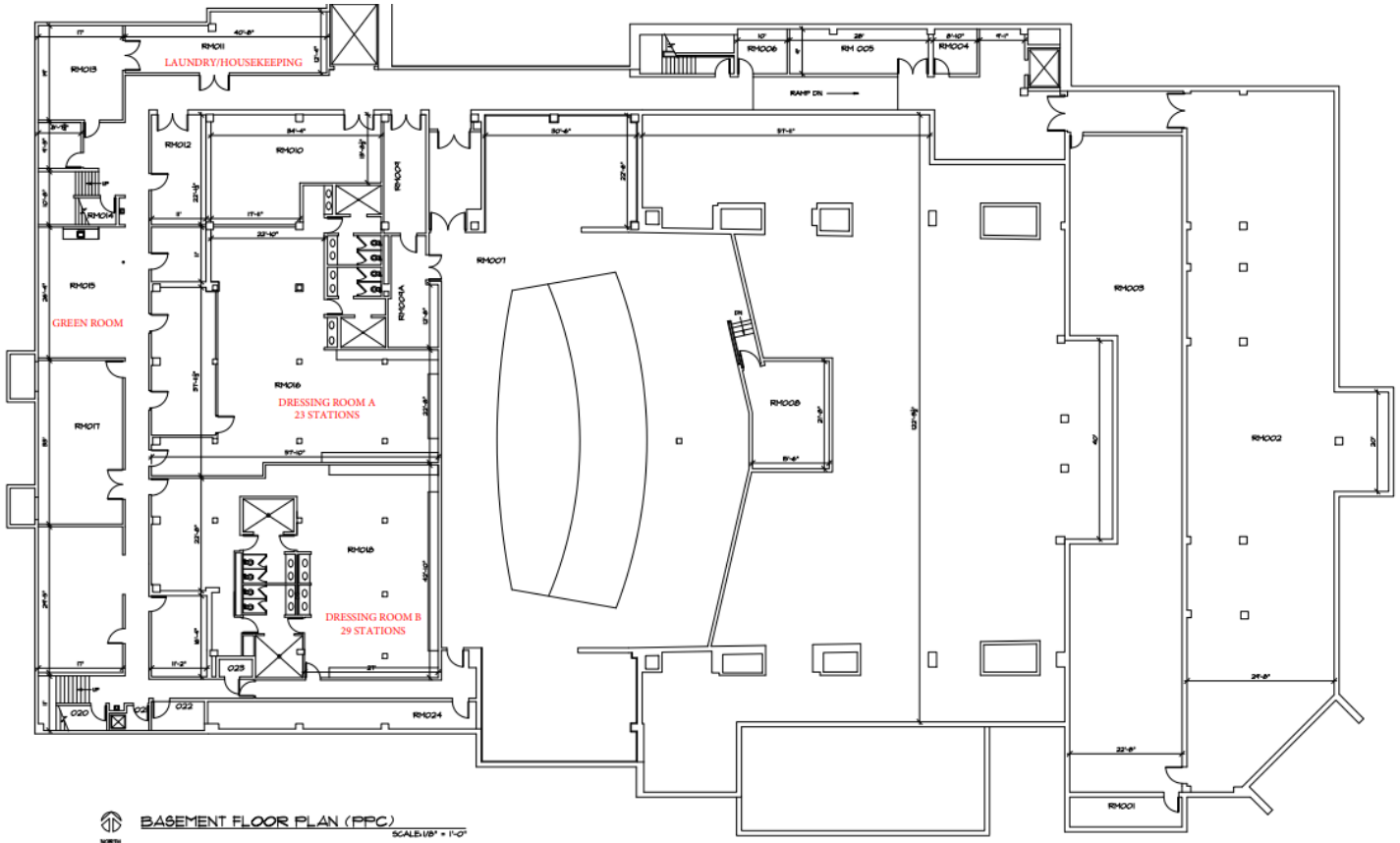


Orchestra Level with Back of House



ORCHESTRA LEVEL FLOOR PLAN (PPC)
SCALE: 1/8" = 1'-0"

Basement Level with Dressing Rooms





Line Set Schedule

PPC Line-set Schedule House Standard						
Show:		General Comments				
Date:						
Head Fly:						
Weight Loader:						
Tour contact:						
Batton	Item on Batton	Weight	From Plaster	Length	In Use	Notes/Comments
House Curtain	House Curtain	N/A	0'-11	80'		CAN NOT MOVE
Teaser	Main Teaser	N/A	1'-7	80'		
Hard Legs	Hard Legs	N/A	2'-3	80'		CAN NOT MOVE
Electric 1	Electric 1	N/A	2'-11	65'		
Electric 1A	Electric 1A	N/A	4'-2	65'		
#1			4'-10	65'		
#2			5'-6	65'		
#3			6'-0	65'		
Concert Ceiling 1	N/A	N/A	6'-7	90'		CAN NOT MOVE
#4	Boarder	105	8'-0	65'		
#5	Monitor World Legs		8'-8	65'		
#6	Legs #1	120	9'-4	65'		
#7			10'-4	65'		
#8			11'-6	65'		
#9			12'-8	65'		
#10			13'-4	65'		
#11			14'-0	65'		
#12	2nd Electric	490	15'-4	65'		
#13			16'-9	65'		
#14			17'-4	65'		
#15	Boarder	105	18'-0	65'		
Concert Ceiling 2	N/A	N/A	19'-5	90'		CAN NOT MOVE
#16	3rd Electric		20'-8	65'		
#17	Legs #2	120	22'-0	65'		
#18			23'-4	65'		
#19			24'-2	65'		
#20	4th Electric		24'-8	65'		
#21			25'-4	65'		
#22			26'-0	65'		
#23			27'-5	65'		
#24			28'-0	65'		
#25	Mid-Stage Main Black	385	28'-8	65'		
#26			29'-10	65'		
#27	Boarder	105	30'-6	65'		
Concert Ceiling 3	N/A	N/A	31'-7	90'		CAN NOT MOVE
#28	Legs #3	120	32'-8	65'		
#29	Cyc skrim	180	34'-3	65'		
#30			35'-7	65'		
#31			36'-4	65'		
#32			36'-11	65'		
#33			37'-8	65'		
#34			38'-3	65'		
#35	Main Black/ Blackout	385	39'-7	65'		
#36			41'-0	65'		
#37			42'-0	65'		
#38			42'-8	65'		
Concert Ceiling 4	N/A	N/A	43'-9	90'		CAN NOT MOVE
#39			45'-0	65'		
#40			46'-10	65'		
#41	Crossover	140	49'-6	65'		CAN NOT MOVE



Lighting inventory

Item	Number
COLORTRAN CYC GROUND ROW INSTRUMENTS	13
FRESNEL	19
LED - ETC LUSTRS ZOOMS (10° - 40°)	21
LED - FLOOR CYC LIGHTS RGBW	10
LED - HANGING CYC LIGHTS RGBW	10
LED - MUSIC STAND LIGHTS WITH LED - EDISON OR BATTERY	20
LED - SOURCE 4 LED PAR CANS	21
LEKO 10° LENSE BARREL	75
LEKO 19° LENSE BARREL	54
LEKO 26° LENSE BARREL	23
LEKO 36° LENSE BARREL	32
LEKO 5° LENSE BARREL	21
LEKO 50° LENSE BARREL	8
LEKO 750W ZOOM	6
MUSIC STAND LIGHTS WITH 15W INCANDESCENT	52
PAR 56 GROUND ROW	11
PAR 64 MEDIUM	47
PAR 64 NARROW	78
PAR 64 VERY NARROW	12
PAR 64 WIDE	30
PIPE/LIGHT TREE/BOOM - 10'	3
PIPE/LIGHT TREE/BOOM - 10'-6"	4
PIPE/LIGHT TREE/BOOM - 12'	6
PIPE/LIGHT TREE/BOOM - 13'	1
PIPE/LIGHT TREE/BOOM - 14'	6
PIPE/LIGHT TREE/BOOM - 6'	1
PIPE/LIGHT TREE/BOOM - 8'	1
PIPE/LIGHT TREE/BOOM - 8'-6"	2
PIPE/LIGHT TREE/BOOM - 9'	7
PIPE/LIGHT TREE/BOOM - 9'-6"	2
WORK SCOOPS	5



Building Items available

PIKES PEAK CENTER EQUIPMENT

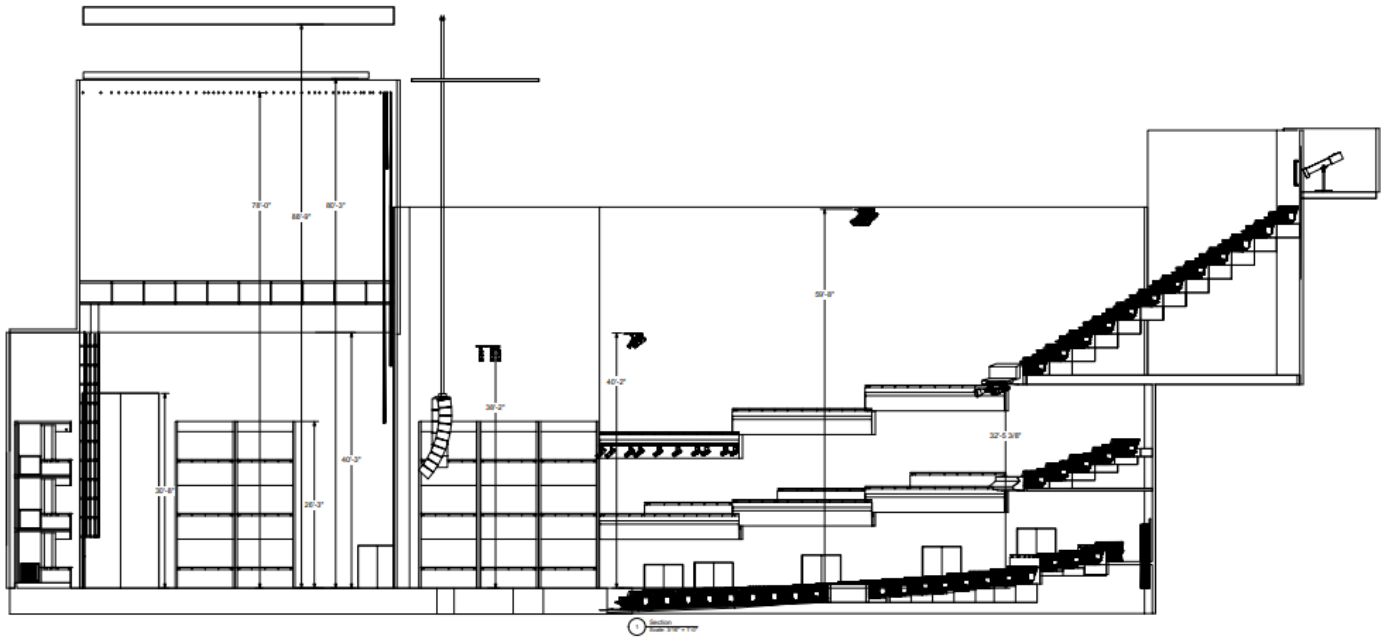
The following equipment/Services are available for use. Please note that some items will have additional fees associated with them. Please contact us for those specific details.

AIR PURIFIER	LAG BOLTS/SCREWS PUT INTO STAGE DECK
BALLET BARRES	MARLEY VINYL DANCE FLOOR - PER STRIP
BATTEN POWER DROP BOX	MERCHANDISE - BOOTH IN LOBBY
CABLES - CAT5 OR CAT 6 (CONNECTING CONSOLES)	MERCHANDISE - POWER
CABLE RAMPS	MUSIC STAND LIGHTS PPC OWNED
CABLES - DMX RUN (PER 100')	MUSIC STANDS PPC OWNED
CABLES - MUSIC LIGHT STRINGERS	OXYGEN CYLINDER
CARPET - ENTIRE PIT	OXYGEN MASK
CARPET - PER CARPET	PARKING - RESERVED PARKING SPOTS PER DAY
CHAIRS - HIGH TOP CHAIRS	PIANO - BALDWIN 6' GRAND
CHAIRS - LOGE STYLE	PIANO - UPRIGHT YAMAHA
CHAIRS - ORCHESTRA	PIANO TUNING
CHAIRS - RED PLASTIC	PIPE AND DRAPE, CHARGED PER FOOT
CHAIRS - STOOL	PODIUM/LECTURN
CHAIRS - STUDIO BEE/FOH/TOWER	PROJECTION SCREEN 15 X 20
CONCERT CEILINGS (NUMBER USED)	PROJECTION SCREEN 30 X 40
DÉCOR - FULL LENGTH MIRROR	PROJECTION SCREEN 5' x 6'
DÉCOR - FURNITURE (SOFA, LOVE SEAT, TABLES)	PROJECTION SCREEN 7' x 7'
DÉCOR - HOLIDAY DECORATIONS IN LOBBY	PROJECTOR (EPSON)
DÉCOR - HOLIDAY DECORATIONS ON STAGE	RISER - CONDUCTORS RISER
EASELS	RISER - SICO 6 X 8
DÉCOR - FANS	RISER - WENGER 3 X 8
FLAG - AMERICAN (BIG)	SHORE POWER
FLAG - AMERICAN (SMALL) WITH POLE	SHORE POWER DISTRO
FLAG - STATE (SMALL) WITH POLE	SOFTGOODS - BORDERS
GENIE LIFT	SOFTGOODS - CYCLORAMA
HEATER - PERSONAL SPACE	SOFTGOODS - LEGS (PAIRS)
HUMIDIFIER	SOFTGOODS - MAIN BLACK
INTERNET - HARDWIRE	SOFTGOODS - SCRIM
INTERNET - LIVE STREAM FEED	SOUND - ALLEN & HEATH CONTROL ROOM MIX BOARD
INTERNET - WIRELESS	SOUND - AUDIO MIX BOARD FOH – MIDAS PRO-X

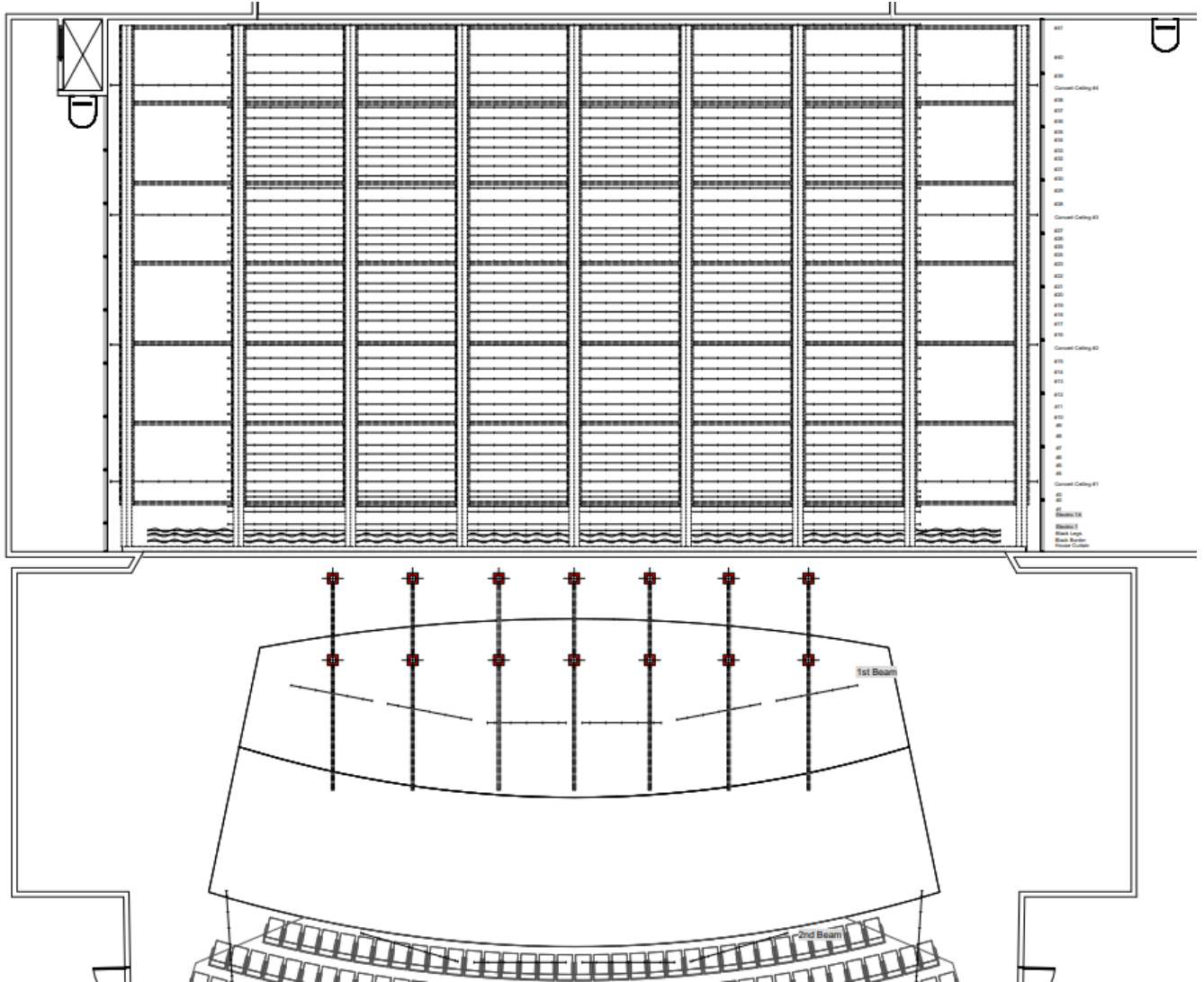


SOUND - AUDIO MIX BOARD FOR MONITORS-MIDAS PRO-2
SOUND - AUDIO POWER DISTRO
SOUND - CD RECORDER
SOUND - CD'S
SOUND - CLEAR-COM (Headset and Beltpack)
SOUND - DIRECT INPUT BOXES (DI)
SOUND - LOBBY SOUND SYSTEM
SOUND - MICROPHONE CABLED
SOUND - MICROPHONE LAVALIER
SOUND - MICROPHONE OVER EAR
SOUND - MICROPHONE WIRELESS
SOUND - MIXING BOARD (EACH)
SOUND - MIXING BOARD DYNASONICS APB
SOUND - MIXING BOARD MACKIE 16-CHANNEL
SOUND - MONITOR SPEAKERS
SOUND - MONITORS AS MAIN SPEAKERS
SOUND - PA RESTORED (AFTER TOUR)
SOUND - PA STRIPED (FOR TOUR)
SOUND - PAGING SYSTEM
SOUND - RACKS AND STACKS: PROCENIUM LINE ARRAY
SOUND - SMALL PORTABLE SOUND SYSTEM
SOUND - SPEAKERS – PROSCENIUM LINE ARRAY
SOUND - SPEAKERS B&C DUAL 18" SUBS
SOUND - SPEAKERS B&C MAINS
SOUND - SPEAKERS B&C MEDIUM SPEAKERS (PAIR)
SOUND - SPEAKERS FRONT FILL WEDGE
SOUND - SPEAKERS-THRUST CLUSTER
SOUND - WIRELESS STAGE ANTENNA BOOSTER
STAGE LIGHTING - BALCONY RAIL LIGHTS USED BY TOUR
STAGE LIGHTING - FOLLOWSPOTS 2K SUPER TROOPER (EACH)
STAGE LIGHTING - LIGHTING BOOM BASES
STAGE LIGHTING - LIGHTING BOOM PIPES
STAGE LIGHTING - LIGHTING RESTORE (AFTER TOUR)
STAGE LIGHTING - LIGHTING STRIP (FOR TOUR)
STAGE LIGHTING - POWER TIE IN
STAGE LIGHTING - TOWER RAIL LIGHTS USED BY TOUR
STAGE LIGHTING CONSOLE - ION
STAGE LIGHTING PACKAGE PERFORMANCE: LARGE (76-200)
STAGE LIGHTING PACKAGE PERFORMANCE: MEDIUM (26-75)
STAGE LIGHTING PACKAGE PERFORMANCE: SMALL (0-25)
STAGE LIGHTING PACKAGE REHEARSAL: LARGE (76-200)
STAGE LIGHTING PACKAGE REHEARSAL: MEDIUM (26-75)
STAGE LIGHTING PACKAGE REHEARSAL: SMALL (0-25)
STAGE LIGHTING PERFORMANCE: FULL (200+)
STAGE LIGHTING REHEARSAL: FULL (200+)
STUDIO BEE LIGHT SYSTEM PERFORMANCE - 32 LIGHTS
STUDIO BEE LIGHT SYSTEM REHEARSAL - 32 LIGHTS
STUDIO BEE SEATING RISER 4X8
STUDIO BEE SOUND SYSTEM
STUDIO BEE STAGE 12 X 40
TABLE - 6' ROUNDS
TABLE- 6' BANQUET
TABLE DRESSING, PER TABLE (6' AND 8' TABLES)
TABLES - 8' BANQUET
TABLES - HIGH TOP TABLES
TABLES - SCHOOL TABLES (18" BY 8')
TABLES - SQUARE WITH BASES
TABLES AND CHAIRS ANBC
TABLES AND CHAIRS MEZZANINE
TAPE - 1" FLOURECENT GAFF
TAPE - 2" BROWN GAFF
TAPE - 2" GAFF
TAPE - 3" GAFF
TELEPHONES
TOWELS - BATH
TOWELS - HAND
TV MONITOR/VCR
VIDEO MONITOR - STAGE FEED
VIDEO RECORDING
WARDROBE - COAT RACKS
WARDROBE - IRON AND IRONING BOARD
WARDROBE - RACKS
WARDROBE - SEWING MACHINE USED
WARDROBE - STEAMER
WASHER AND DRYER

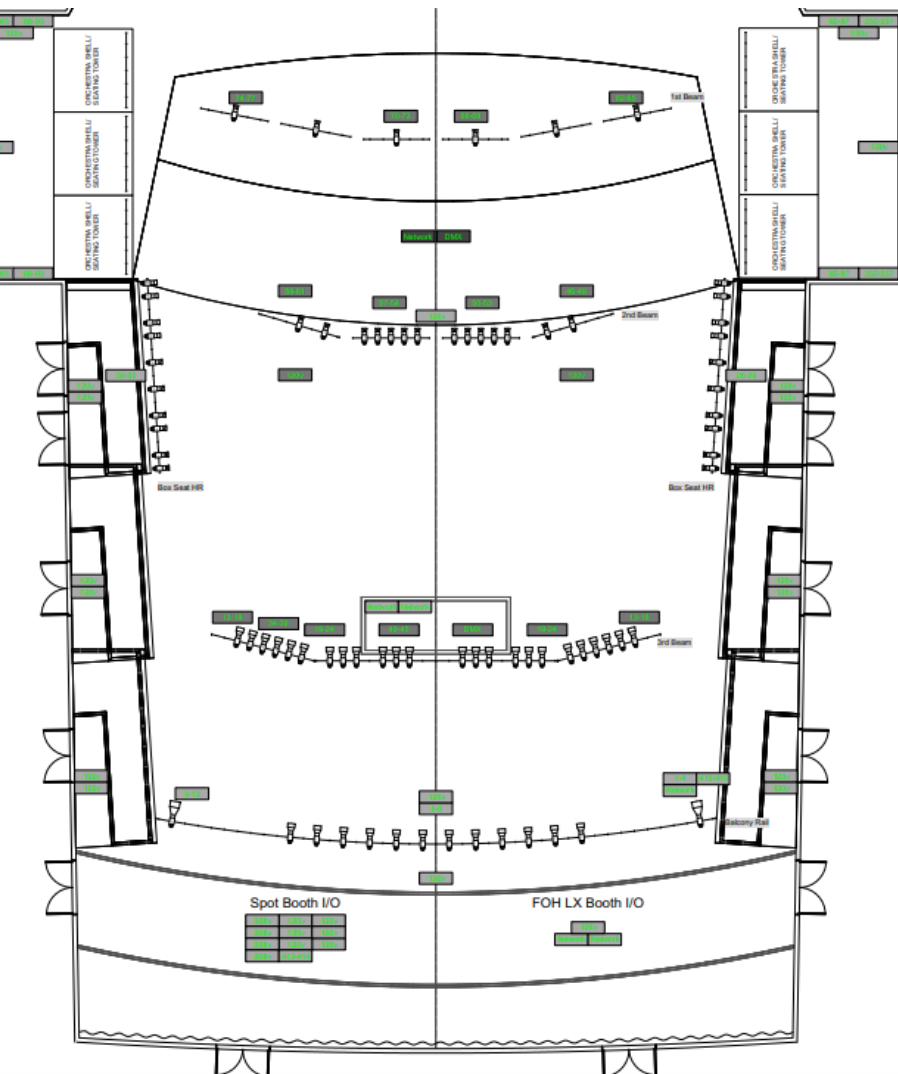
Section with Dimensions






Great Hall Rigging Plot



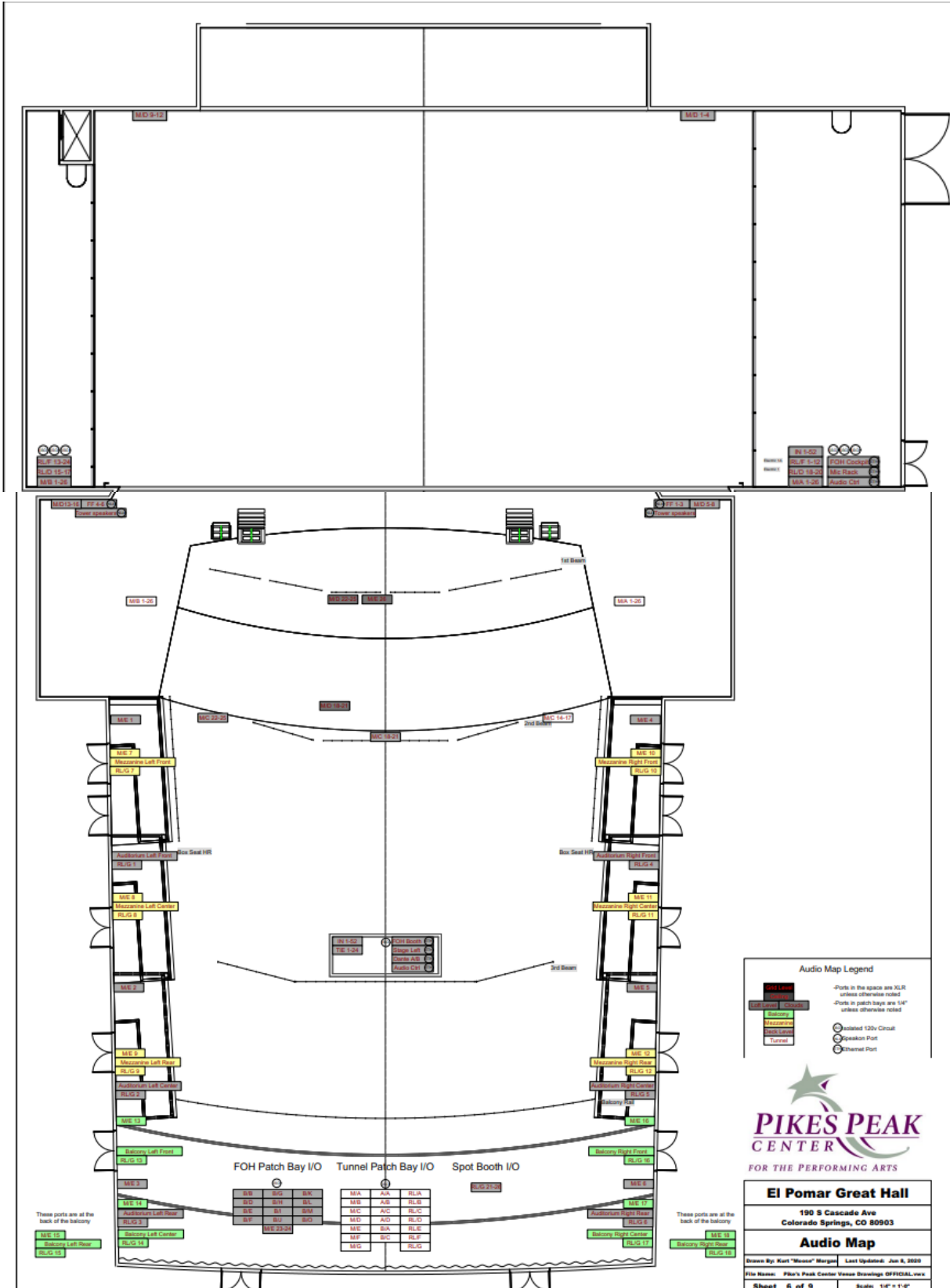
Lighting Plot/Circuit locations



Lighting Map Legend

-  300v Power (breakers not considered)
-  200v Power (breakers not considered)
-  Smart Port

Audio locations



Audio Map Legend

- ME 1-15: Microphone Locations
- FOH Patch Bay I/O: Front of House Patch Bay
- Tunnel Patch Bay I/O: Tunnel Patch Bay
- Spot Booth I/O: Spot Booth Patch Bay
- 1st Balcony: 1st Balcony
- 2nd Balcony: 2nd Balcony
- 3rd Balcony: 3rd Balcony
- 120V Circuit: 120V Circuit
- Speaker Port: Speaker Port
- Ethernet Port: Ethernet Port



PIKES PEAK
CENTER
FOR THE PERFORMING ARTS

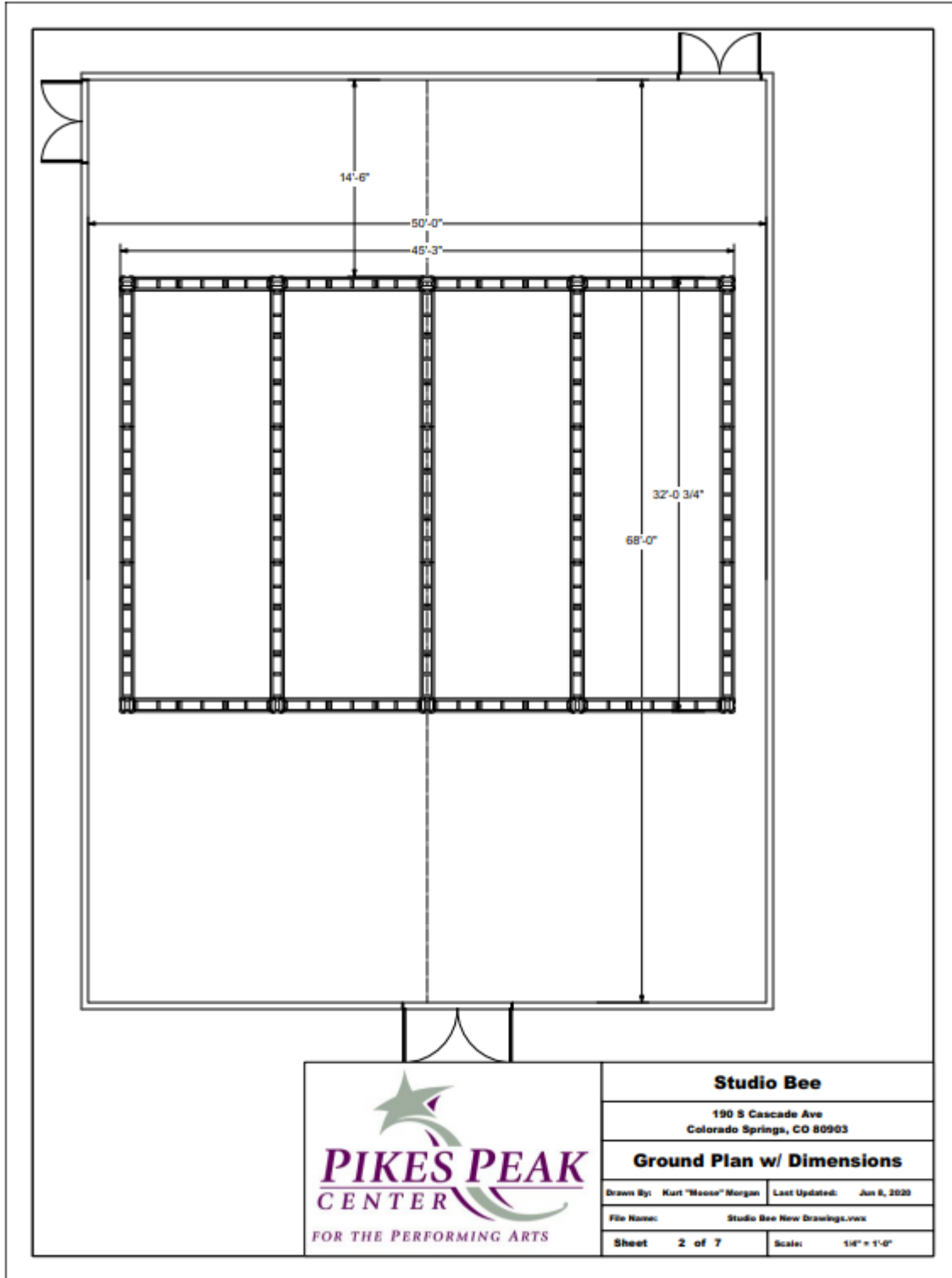
El Pomar Great Hall
190 S Cascade Ave
Colorado Springs, CO 80903

Audio Map

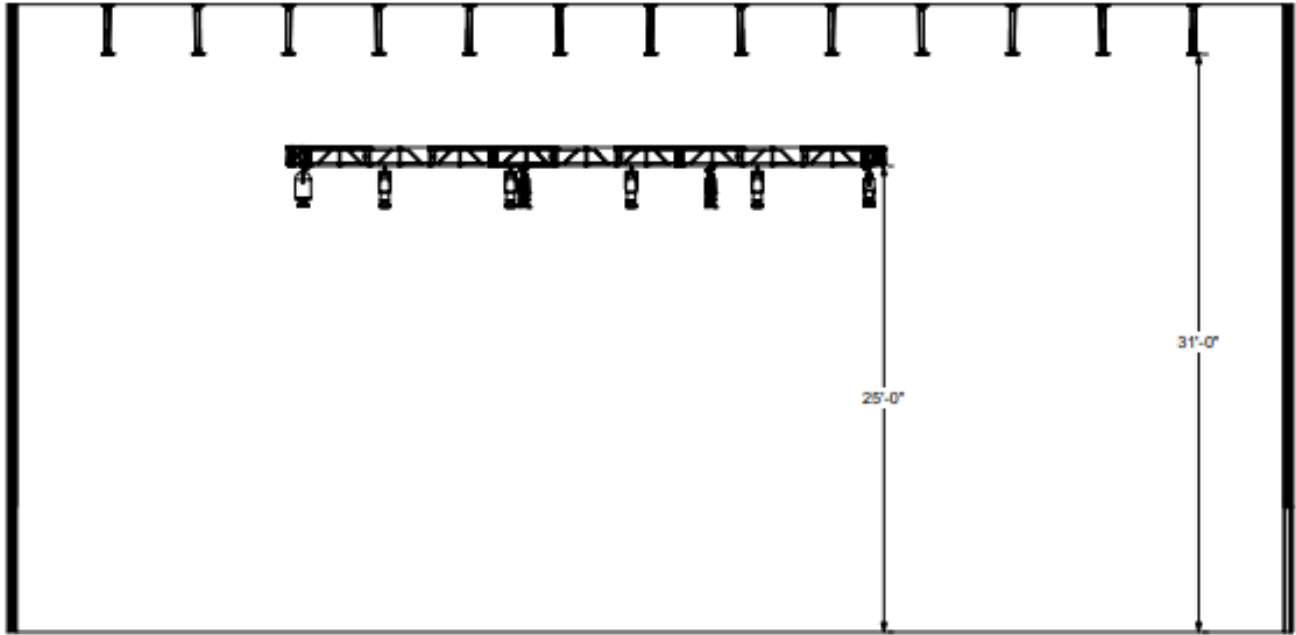
Drawn By: Kurt "Moose" Morgan | Last Updated: Jun 8, 2020
File Name: Pikes Peak Center Venue Drawings OFFICIAL.mxd
Sheet 6 of 9 | Scale: 1/4" = 1'-0"

Studio Bee

Ground Plan with Dimensions

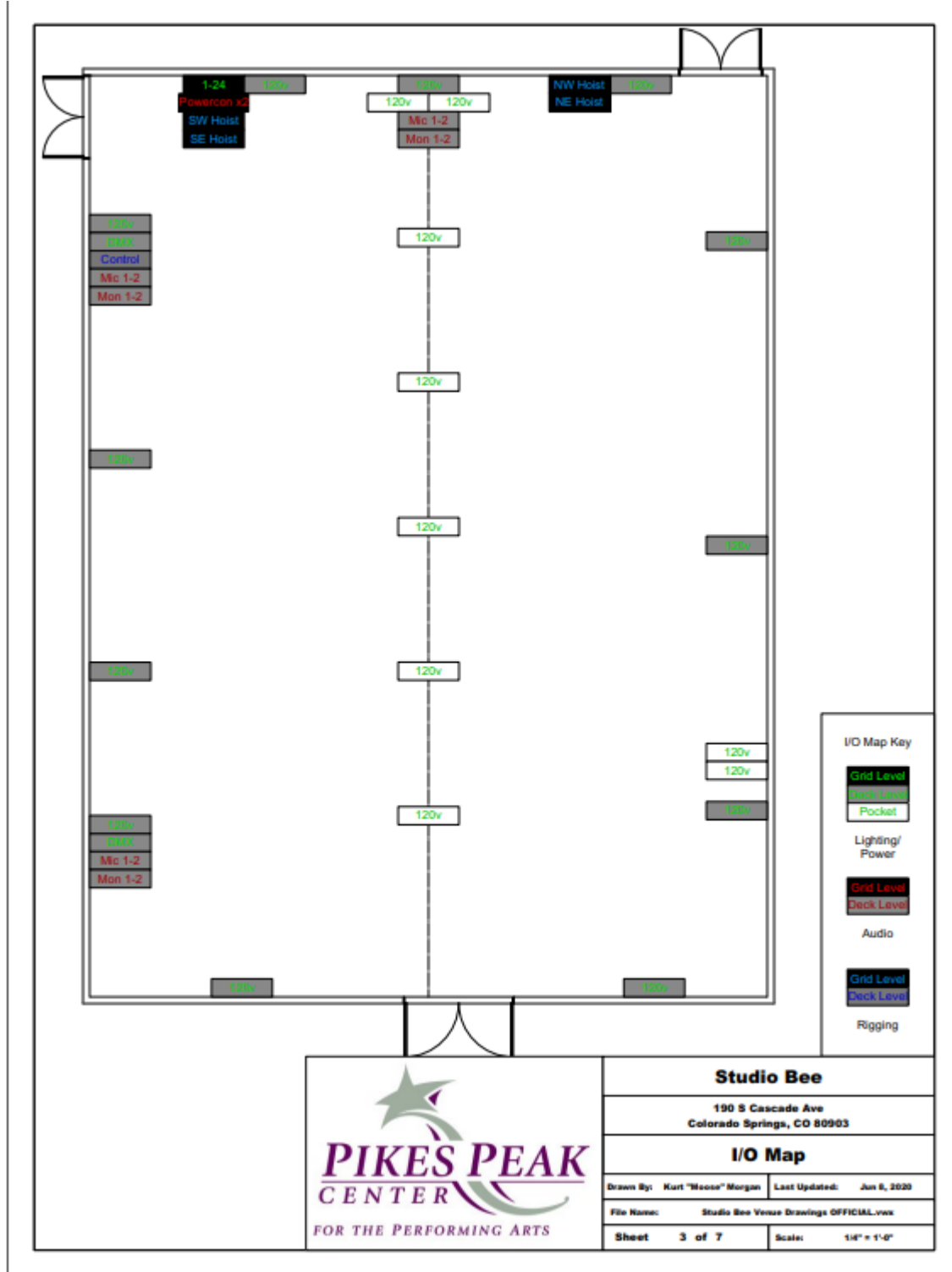


Section with Dimensions



2 Section w/ Dimensions
Scale: 1/4" = 1'-0"

I/O Map



Light Plot

